

POSTED 6-27-'04

This manual is for reference and historical purposes, all rights reserved.

This page is copyright © by M. Butkus, NJ.

This page may not be sold or distributed without the expressed permission of the producer

I have no connection with any camera company

On-line camera manual library

This is the full text and images from the manual.

This may take 3 full minutes for this PDF document to download.

The main page is located at [www.butkus.org/chinon](http://www.butkus.org/chinon)

**If you find this manual useful, how about a donation of \$3 to:**

**M. Butkus, 29 Lake Ave., High Bridge, NJ 08829-1701**

**and send your e-mail address so I can thank you.**

**Most other places would charge you \$7.50 for a electronic copy or  
\$18.00 for a hard to read Xerox copy.**

**This will allow me to continue to buy new manuals and pay their shipping costs.**

**It'll make you feel better, won't it?**

If you use Pay Pal or wish to use your credit card, use the Pay Pal Link on my page.

If you found this page from any other location (other then a link)  
please notify me at [mike@butkus.org](mailto:mike@butkus.org)

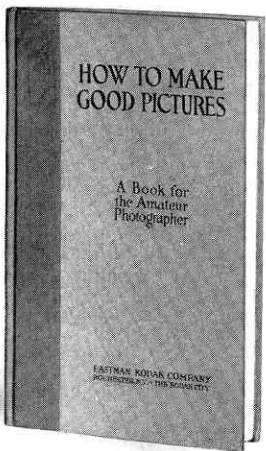
[www.orphancameras.com](http://www.orphancameras.com)

*Picture taking with the*  
**No. 2 Cartridge**  
**Hawk-Eye Camera**  
(Model C)



**EASTMAN KODAK COMPANY**  
**ROCHESTER, N. Y., U. S. A.**

Taken from [www.butkus.org/chinon](http://www.butkus.org/chinon)



**A** PRACTICAL book for the amateur. It describes in a simple, understandable way every phase of photography that the amateur is likely to be interested in, such as developing, printing, etc. Profusely illustrated.

EASTMAN KODAK COMPANY  
*At your dealer's* ROCHESTER, N. Y.

OCTOBER, 1926.

# “KODAKERY”

*A monthly magazine that teaches how to make better pictures, will be sent FREE OF CHARGE to anyone who obtains one of these amateur cameras, if this blank is filled out and sent to us within 30 days from the date the camera was received. KODAKERY will be sent for one year only on this offer, after that the subscription price will be sixty cents for one year or one dollar for two years, but you are under no obligation to renew.*

EASTMAN KODAK COMPANY.

TO THE EASTMAN KODAK COMPANY,  
ROCHESTER, NEW YORK:

*Accepting your offer, please put my name on the mailing list for “KODAKERY” (with the understanding that there is to be no cost to me), I having obtained a*

.....  
(Kind of Camera)

from .....

on .....

(Date Here)

**Print your name and address plainly on reverse side of this page.**

Form No. 513.26.

TEAR OFF HERE

*Picture taking with the*

**No. 2 Cartridge  
Hawk-Eye Camera**  
(Model C)

*Published by*  
EASTMAN KODAK COMPANY  
ROCHESTER, N. Y., U. S. A.

## Order Film by Number

All Kodak Films are distinguished by the numbers on the ends of the cartons. This number is also on the cartridge, and on the camera.

**120** is the number of the film for the No. 2 Cartridge Hawk-Eye Camera.

## Before Loading

Before taking any pictures with your camera, read the following instructions carefully. Make yourself familiar with the camera, taking especial care to learn how to operate the shutter (see page 12).

The first thing to remember is that the light, which impresses the photographic image upon the sensitive film in a fraction of a second when it comes through the lens, can destroy the film as quickly as it makes the picture. While loading and unloading the camera, be very careful to keep the protective paper wound tightly around the film to prevent the light striking it.

## CONTENTS

Loading the Camera	5
Making the Exposures	12
Removing the Film	21
Finishing the Pictures	25



# Loading the No. 2 Cartridge Hawk-Eye Camera

**T**HE No. 2 Cartridge Hawk-Eye Camera can be loaded or unloaded in daylight. This should be done in a subdued light, *not* in the direct sunlight. Use film No. 120 for the No. 2 Cartridge Hawk-Eye Camera.

## To Load

1. Push over the spring catches A-A, see Fig. I.



Fig. I



Fig. II

2. Pull up the winding key as shown in Fig. II.

3. Remove the roll holder, as in Fig. III.

It will be seen that at each forward corner, there is a recess to hold a spool of film.

There is an empty spool in the recess on the winding side; this is to be used as the reel.

The winding side may always be distinguished by the round opening in the roll holder, directly behind the exposure lever. The winding key is inserted in the reel through this opening.



Fig. III

4. Insert the spool of film in the recess opposite the winding side, drawing out one of the spring grips just enough to permit the spool to drop into place, as shown in Fig. IV.

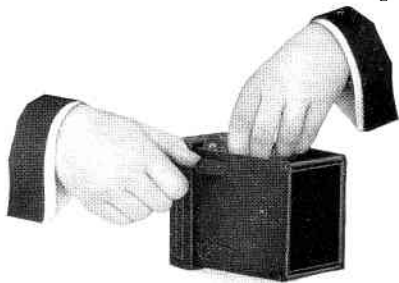


Fig. IV

Fit the spool pins into the holes at each end of the spool, so the spool of film will revolve upon the pins.

## Important

The word "TOP," which is printed on the protective paper near the top of the spool, must be next to the side of the roll holder, which has the round opening through which the key is inserted in the reel. If the cartridge is inserted the wrong way, the protec-

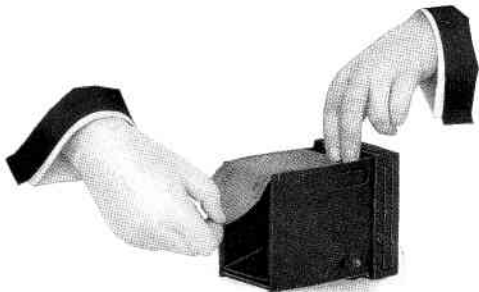


Fig. V

tive paper will come between the lens and the film and no pictures could be made.

5. Remove the band that holds the protective paper; pass the paper *over the rollers* and across the opening in the back of the roll holder (Fig. V). Unfold the end of the protective paper and thread it through the longer opening of the slit in the reel as far as it will go, as shown in Fig. VI, *being very careful to*



Fig. VI

*have the paper drawn straight.* Give the spool two or three forward turns to make the paper hold securely on the spool.

## Caution

If too much of the protective paper is turned off, before the camera is closed, some of the film will be uncovered, fogged and ruined.

6. The camera must now be closed. Reinsert the roll holder in the outside box so that the slotted end of the winding reel which shows through the round hole in the roll holder, will come next to the winding key in the outside box. Fasten the roll holder to the outside box with the two catches A-A illustrated in Fig. I, page 5.



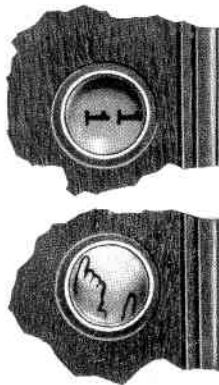
Fig. VII

7. Press in, and at the same time turn the winding key until the web at the lower end of the key fits into the slot in the spool end. Fig. VII.

8. Turn the key about fifteen turns until a warning hand appears in the red window, then turn slowly until the figure 1 appears in the center of the window.

The film is now in position for the first picture.

Press in the winding key slightly when turning it to make sure that the web on the key stays within the slot in the spool.



## Making the Exposures

### “Snapshots”

THE No. 2 Cartridge Hawk-Eye Camera is a fixed-focus camera, therefore, objects nearby and at a distance will be sharp. Subjects that are about eight feet and farther from the camera will be sharp, and even those as near as six feet, while not as sharp, will be sharp enough for all practical purposes. Do not attempt to take pictures of subjects nearer to the camera than six feet, without using a Kodak Portrait Attachment, see page 19.

The shutter of this camera is released by pushing the exposure lever B (Fig. I), either up *or* down with the thumb. Push the lever *slowly* and in one direction only.

If the lever stands at the top of the slot simply push it to the bottom, or if it is at the bottom push it to the top.





Fig. I

If the lever is not pushed all the way to the other end of the slot, the shutter will not move, no "click" will be heard and no exposure made. Push the lever as far as it will go.

When making snapshots, the subject should be in the broad, open sunlight, but the camera must not. The sun should be behind your back or over your shoulder. If it shines directly into the lens it will blur and fog the picture.

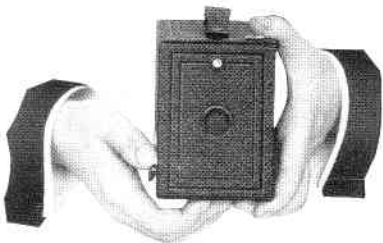


Fig. II

Point the camera at the subject to be photographed and looking into the finder from directly over the center of it, include what you want by turning the camera either to the right or left.

Only the objects that show in the finder will show in the picture.

All being ready:

Hold the camera steady and level as shown in illustration (Fig. II) and push the exposure lever B (Fig. I, page 13) *once*, as far as it will go. *This makes the exposure.*

The exposure lever must be pushed *slowly*. If the camera is not held steadily the picture will be blurred.

## **Turn a New Section of Film into Position**

Press in the winding key slightly and turn it slowly until the next number appears in the center of the red window.

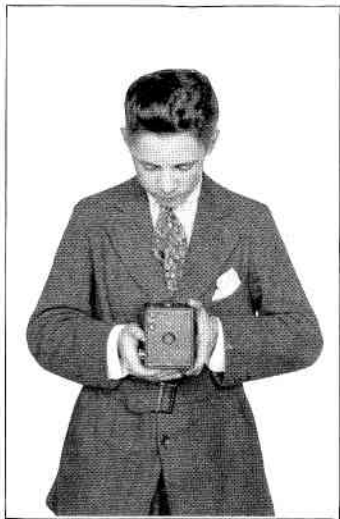
The warning hand appears only before No. 1.

Repeat these operations after each exposure.



## **Important**

**When making snapshots with any camera, hold it firmly against the body**



**as shown. When pushing the exposure lever, hold the breath for the instant.**

## Hold Camera Level

The camera must be held level. If all of the subject cannot be included in the finder without tilting the camera upwards, move backwards until it is all included *with the camera held level*.



Fig. III

EFFECT PRODUCED BY TILTING THE CAMERA

Tilting the camera to bring in the top of a tall building produces the distorted effect shown in Fig. III. Sometimes a tall building can be photographed from a building opposite, at a level with its center.

If the subject is below the normal height, like a small child or a dog, the camera should be held down level with the center of the subject.

## Kodak Portrait Attachment

The Kodak Portrait Attachment is an extra lens, which, when slipped in the lens opening in the front of the camera, makes large head and shoulder portraits.

Place the Attachment in the lens opening. Compose the picture in the finder. *The subject must be 3½ feet from the lens.*

The Attachment can also be used when making pictures of flowers and similar subjects.

Use *Kodak Portrait Attachment No. 1* with the No. 2 Cartridge Hawk-Eye Camera (Model C).

## Kodak Diffusion Portrait Attachment

The Kodak Diffusion Portrait Attachment is a supplementary lens used in the same manner as the regular Kodak Portrait Attachment. It produces a true, soft-focus effect free from objectionable "fuzziness" or out-of-focus appearance. By using this Attachment, portraits are made more artistic, due to the softening effect of diffusion.

With the No. 2 Cartridge Hawk-Eye Camera (Model C), use a *Kodak Diffusion Portrait Attachment No. 1*.



## Removing the Film

**T**HIS camera can be loaded or unloaded in daylight. This should be done in a subdued light, not in direct sunlight.

1. When the last section of film has been exposed, give the winding key about eighteen extra turns to cover the film with protective paper.

2. Remove the roll holder in a subdued light, as described on pages 5 and 6.

3. Hold the ends of the protective paper and the sticker together to prevent the film and paper from loosening. Draw out the spring grip just enough to release the spool and lift out the roll of exposed film, Fig. I, page 22. If the sticker has been wound under the roll, revolve the spool to bring it up.

4. Fold under about half-an-inch of the protective paper, and fasten with the sticker.

Folding under the end of the paper makes the breaking of the seal easy, when ready to develop the film.



Fig. 1

5. Wrap up the exposed film immediately to prevent the possibility of light being admitted. The roll of film is now ready for developing and printing.

6. Remove the empty spool and place it in the recess on the winding side of the roll holder. The slotted end of the spool should come next to the key hole.

**Important:** Film should be developed as soon as possible after exposure. The quality of the image on all sensitized products is retained by prompt development after exposure.

It is a good plan to reload the camera as soon as an exposed film has been removed, to be ready for the next pictures.

Use film No. 120 for the No. 2 Cartridge Hawk-Eye Camera, Model C, and load the camera as described on pages 5 to 11 inclusive.

## “Cinch” Marks

If the film and paper loosen up a trifle when taken from the camera, there is an inclination to take the cartridge in the hand and wind it as closely as possible, “cinching” it tightly with a twisting motion. There is nothing more likely to injure the negatives than this tight drawing of the film, as it rubs the surface, making fine parallel scratches running lengthwise of the film, which, in some cases, will ruin the negatives. *Do not “cinch” the cartridge.* It simply needs to be wound tightly enough to keep the protective paper within the flanges of the spool.

## Keep Dust Out of the Camera

It is advisable to wipe out the inside of the camera occasionally with a slightly damp cloth, especially if the camera has not been used for some time.

**Load your Hawk-Eye with Kodak Film.  
Look for this Trade Mark on the box:**



*“If it isn’t Eastman,  
it isn’t Kodak Film.”*

## Finishing the Pictures

THERE are two distinct steps in the making of photographs—the picture *taking* and the picture *finishing*. To free our instruction books from unnecessary details, which might be confusing, we give with the camera the directions for picture *taking* only.

The instructions in this booklet are ample for the handling of the camera under practically all conditions. Similarly, those who wish to do their own developing and printing will find equally full directions accompanying the Kodak Film Tanks (for developing in daylight), or our Outfits for tray or dark-room use.

To develop film, No. 120, used in the No. 2 Cartridge Hawk-Eye Camera, obtain, preferably, a “Brownie” Kodak Film Tank. The film may be developed in the larger tanks, but not so economically.

The film (No. 120) may also be developed in daylight in the No. 2 Brownie Developing Box; the method of developing film in the Box is different from that of the Tank.

If dark-room development is preferred, an Eastman A B C Developing and Printing Outfit should be obtained

In keeping with our plan and purpose to provide the users of our cameras with every help in the production of good pictures, we will be glad to furnish such developing and printing instructions at any time, whether a tank or outfit is purchased or not.

With the Kodak Film Tank and Velox paper many amateurs find as much pleasure in the finishing of the pictures as in the taking of them, and are able to produce excellent pictures by the simple methods we have worked out.

We never lose interest in anyone using a Hawk-Eye Camera. We are not only willing but are anxious at all times to help solve any problems that may arise, either by sending the necessary printed instructions or by individual correspondence, through our Service Department. Making use of the knowledge of our experts places you under no obligation. Kodak Service is free—and goes with every Kodak or Hawk-Eye Camera.

EASTMAN KODAK COMPANY,  
ROCHESTER, N. Y.

## PRICE LIST

KODAK FILM CARTRIDGE, No. 120, for use with the No. 2 Cartridge Hawk-Eye Camera. 2¼ x 3¼, six exposures.....	\$ .25
KODAK PORTRAIT ATTACHMENT No. 1, for use with the No. 2 Cartridge Hawk-Eye Camera	.50
KODAK DIFFUSION PORTRAIT ATTACHMENT No. 1.....	1.25
KODAK SKY FILTER No. 1.....	.75
No. 2 BROWNIE DEVELOPING BOX.....	1.75
"BROWNIE" KODAK FILM TANK.....	4.00
Duplicating Outfit for above Tank.....	1.75
DEVELOPER POWDERS, for No. 2 Brownie Developing Box, or "Brownie" Kodak Film Tank; six powders.....	.20
EASTMAN A B C DEVELOPING AND PRINTING OUTFIT for dark-room development and printing (4 x 5 or smaller), complete.....	2.00
KODAK ACID FIXING POWDER, one pound.....	.25
Half pound.....	.15
Quarter pound.....	.10
EASTMAN REDUCER AND STAIN REMOVER, box of five tubes.....	.50
VELOX RE-DEVELOPER, package of twelve tubes	1.08

KODALOID PRINTING MASK, No. 3, for use with No. 2 Cartridge Hawk-Eye Negatives..	\$ .10
VELOX PAPER, 2¼ x 3¼, one dozen sheets. . . .	.12
NEPERA SOLUTION (for developing Velox), four-ounce bottle.....	.28
KODAK PHOTO BLOTTER ROLL, for drying prints	1.50
VELOX WATER COLOR OUTFIT, consisting of Artist's Mixing Palette, three special Camel's Hair Brushes and one book of Velox Transparent Water Color Stamps (twelve colors) ..	1.00
VELOX TRANSPARENT WATER COLOR STAMPS, complete booklet of twelve colors.....	.50
KODAK DRY MOUNTING TISSUE, 2¼ x 3¼, three dozen sheets.....	.10
KODAK TRIMMING BOARD, No. 1, five-inch.....	.75
KODAK NEGATIVE ALBUM, to hold 100 2¼ x 3¼ or smaller negatives.....	1.25
BALTIC MOUNTS for prints 2¼ x 3¼, per 50..	1.30
RHODES ALBUM, loose-leaf, cloth cover, 50 black leaves, size 5 x 8.....	.90
Size 7 x 11.....	1.25
KODAK JUNIOR FILM CLIPS, No. 1, each.....	.15
"HOW TO MAKE GOOD PICTURES," an illustrated book for the amateur that includes many helpful suggestions.....	.50



## Developing, Printing and Enlarging

Developing Film, $2\frac{1}{4} \times 3\frac{1}{4}$ , six exposure cartridge.....	\$ .15
Velox Prints, $2\frac{1}{4} \times 3\frac{1}{4}$ , unmounted, each.....	.07
Velox Prints, mounted, each.....	.09

*All prints unmounted unless otherwise specified.*

NOTE—When mailing film for developing, printing or enlarging, mark the package plainly with your name and address, and write a letter of instructions, with remittance.

Bromide Enlargements, mounted on cards:

8 x 10, each.....	\$ 1.00
10 x 12, each.....	1.40

On enlargement orders, if, in our opinion, an enlargement will be improved by double mounting, we will do so at an additional charge of ten cents.

*All prices subject to change without notice.*

EASTMAN KODAK COMPANY,  
ROCHESTER, N. Y.



*Color your prints and  
enlargements with a*

# Velox Water Color Outfit

*No Experience Necessary*

This Outfit consists of an Artist's Mixing Palette, three special Camel's Hair Brushes, and one book of **Velox Transparent Water Color Stamps** (twelve colors).

EASTMAN KODAK COMPANY  
*At your dealer's* ROCHESTER, N. Y.

# SERVICE DEPARTMENT

ADDITIONAL ASSISTANCE FOR  
MAKING BETTER PICTURES

**A**LTHOUGH we give in this manual the essential directions for using the camera it accompanies, there are amateurs who wish for further knowledge of photography.

The Service Department is at their service, *your* service.

Do not hesitate to call on us for information on any photographic subject.

*We are at your service, write to us—  
there is no charge, no obligation.*

Address all Communications

SERVICE DEPARTMENT,  
EASTMAN KODAK CO.  
ROCHESTER, N. Y.



*Velox*  
*now identifiable*

**T**O protect Kodak amateurs, and to protect Developing and Printing houses that endeavor to give their customers the best possible results, we have made Velox paper identifiable. The trade name "Velox" is printed, faintly, on the back of every sheet. Look for it.

Insist on Velox—the paper that exactly meets the requirements of amateur negatives—and know you're getting the best results possible from your films.

*The Velox Book tells the working of a simple paper in simple terms—a valuable photographic help. Free from us or your dealer.*

EASTMAN KODAK COMPANY  
ROCHESTER, N. Y.