

SECTION **SR**
SRS AIRBAG

A
B
C
D
E
F
G
SR
I
J
K
L
M
N
O
P

CONTENTS

FOR USA AND CANADA

PRECAUTION	3	Exploded View	19
PRECAUTIONS	3	Removal and Installation	19
Precaution for Supplemental Restraint System (SRS) "AIR BAG" and "SEAT BELT PRE-TENSIONER"	3	FRONT SEAT BELT PRE-TENSIONER	21
Service	3	Removal and Installation	21
Occupant Classification System	3	OCCUPANT CLASSIFICATION SYSTEM CONTROL UNIT	22
PREPARATION	4	Removal and Installation	22
PREPARATION	4	FOR MEXICO	
Commercial Service Tools	4	PRECAUTION	23
ON-VEHICLE REPAIR	5	PRECAUTIONS	23
DRIVER AIR BAG MODULE	5	Precaution for Supplemental Restraint System (SRS) "AIR BAG" and "SEAT BELT PRE-TENSIONER"	23
Exploded View	5	Service	23
Removal and Installation	5	PREPARATION	24
SPIRAL CABLE	8	PREPARATION	24
Exploded View	8	Commercial Service Tools	24
Removal and Installation	8	ON-VEHICLE REPAIR	25
FRONT PASSENGER AIR BAG MODULE	11	DRIVER AIR BAG MODULE	25
Exploded View	11	Exploded View	25
Removal and Installation	11	Removal and Installation	25
SIDE CURTAIN AIR BAG MODULE	13	SPIRAL CABLE	28
Exploded View	13	Exploded View	28
Removal and Installation	13	Removal and Installation	28
CRASH ZONE SENSOR	15	FRONT PASSENGER AIR BAG MODULE	31
Exploded View	15	Exploded View	31
Removal and Installation	15	Removal and Installation	31
SIDE AIR BAG (SATELLITE) SENSOR	17	FRONT SIDE AIR BAG MODULE	33
Exploded View	17	Exploded View	33
Removal and Installation	17	Removal and Installation	33
DIAGNOSIS SENSOR UNIT	19	SIDE CURTAIN AIR BAG MODULE	35

Exploded View	35	Removal and Installation	39
Removal and Installation	35		
CRASH ZONE SENSOR	37	DIAGNOSIS SENSOR UNIT	41
Exploded View	37	Exploded View	41
Removal and Installation	37	Removal and Installation	41
SIDE AIR BAG (SATELLITE) SENSOR	39	FRONT SEAT BELT PRE-TENSIONER	43
Exploded View	39	Removal and Installation	43

PRECAUTION

PRECAUTIONS

Precaution for Supplemental Restraint System (SRS) "AIR BAG" and "SEAT BELT PRE-TENSIONER"

INFOID:000000003367765

The Supplemental Restraint System such as "AIR BAG" and "SEAT BELT PRE-TENSIONER", used along with a front seat belt, helps to reduce the risk or severity of injury to the driver and front passenger for certain types of collision. This system includes seat belt switch inputs and dual stage front air bag modules. The SRS system uses the seat belt switches to determine the front air bag deployment, and may only deploy one front air bag, depending on the severity of a collision and whether the front occupants are belted or unbelted. Information necessary to service the system safely is included in the "SRS AIRBAG" and "SEAT BELT" of this Service Manual.

WARNING:

- To avoid rendering the SRS inoperative, which could increase the risk of personal injury or death in the event of a collision which would result in air bag inflation, all maintenance must be performed by an authorized NISSAN/INFINITI dealer.
- Improper maintenance, including incorrect removal and installation of the SRS, can lead to personal injury caused by unintentional activation of the system. For removal of Spiral Cable and Air Bag Module, see the "SRS AIRBAG".
- Never use electrical test equipment on any circuit related to the SRS unless instructed to in this Service Manual. SRS wiring harnesses can be identified by yellow and/or orange harnesses or harness connectors.

PRECAUTIONS WHEN USING POWER TOOLS (AIR OR ELECTRIC) AND HAMMERS

When working near the Airbag Diagnosis Sensor Unit or other Airbag System sensors while ignition switch is ON or engine is running, never use air or electric power tools or strike near the sensor(s) with a hammer. Heavy vibration may activate the sensor(s), deploy the airbag(s), possibly cause serious injury. When using air or electric power tools or hammers, always turn OFF ignition switch, disconnect the battery, and wait 3 minutes or more before performing any service.

Service

INFOID:000000003367282

- Do not use electrical test equipment to check SRS circuits unless instructed to in this Service Manual.
- Before servicing the SRS, turn ignition switch OFF, disconnect battery negative terminal and wait at least 3 minutes.
For approximately 3 minutes after the battery negative terminal is removed, it is still possible for the air bag and seat belt pre-tensioner to deploy. Therefore, do not work on any SRS connectors or wires until at least 3 minutes have elapsed.
- Diagnosis sensor unit must always be installed with their arrow marks "←" pointing towards the front of the vehicle for proper operation. Also check diagnosis sensor unit for cracks, deformities or rust before installation and replace as required.
- The spiral cable must be aligned in the neutral position since its rotations are limited. Do not turn steering wheel and column after removal of steering gear.
- Handle air bag module carefully. Always place driver and front passenger air bag modules with the pad side facing upward and seat mounted front side air bag module standing with the stud bolt side facing down.
- Conduct self-diagnosis to check entire SRS for proper functioning after replacing any components.
- After air bag inflates, the front instrument panel assembly should be replaced if damaged.
- Always replace instrument panel pad following front passenger air bag deployment.

Occupant Classification System

INFOID:000000003367283

- Replace occupant classification system control unit and passenger front seat cushion as an assembly. Refer to [SE-106. "Removal and Installation"](#).

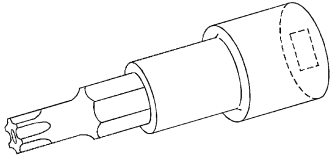
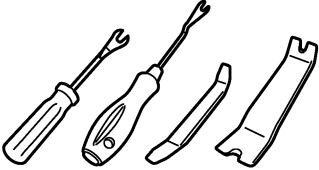
A
B
C
D
E
F
G
SR
I
J
K
L
M
N
O
P

PREPARATION

PREPARATION

Commercial Service Tools

INFOID:000000003367284

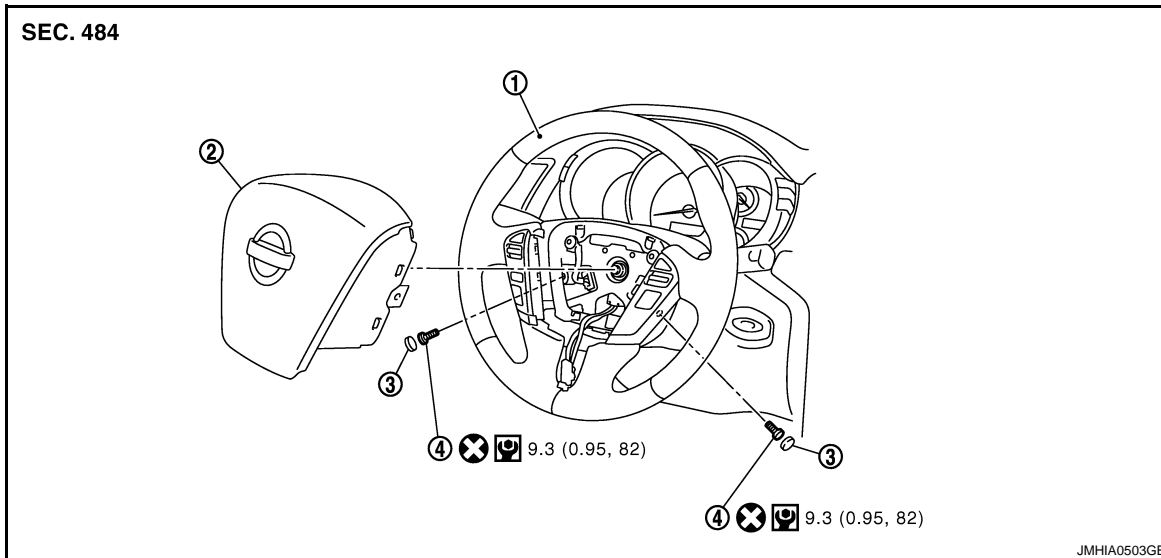
Tool name	Description
<p data-bbox="181 514 451 546">Tamper resistant TORX bit</p>  <p data-bbox="841 630 901 646">S-NT757</p>	<p data-bbox="987 514 1302 546">Removes driver air bag module</p>
<p data-bbox="181 766 321 798">Remover tool</p>  <p data-bbox="841 882 933 898">JMKIA3050ZZ</p>	<p data-bbox="987 766 1356 798">Removes clips, pawls, and metal clip</p>

ON-VEHICLE REPAIR

DRIVER AIR BAG MODULE

Exploded View

INFOID:000000003367285



- | | | |
|----------------------|--------------------------|---------------------|
| 1. Steering wheel | 2. Driver air bag module | 3. Side lid (LH/RH) |
| 4. TORX bolt (LH/RH) | | |

Refer to [GI-4, "Components"](#) for symbols in the figure.

Removal and Installation

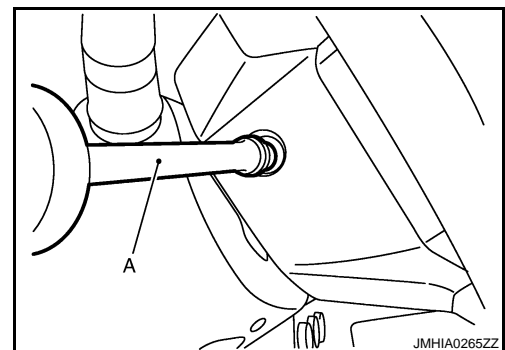
INFOID:000000003367286

WARNING:

- Before servicing, turn ignition switch OFF, disconnect battery negative terminal and wait at least 3 minutes.
- Always work from the side of air bag module. Never work in front of it.
- Never use the air tools or electric tools for servicing.

REMOVAL

1. Remove the side lids (LH/RH).
2. Remove the TORX bolts (LH/RH) from the steering wheel (1) lower side using TORX bit (A).



3. Pull out the driver air bag module.

DRIVER AIR BAG MODULE

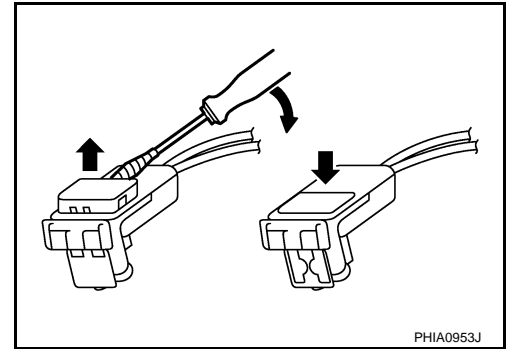
< ON-VEHICLE REPAIR >

[FOR USA AND CANADA]

4. Disconnect the driver air bag harness connector.

NOTE:

- For installing/removing the driver air bag harness connector, insert thin screwdriver wrapped in tape into notch, lift lock and remove the connector.
- Install the connector with lock raised, and push lock into the connector.
- After installing the connector, check that the lock is pushed securely into it.

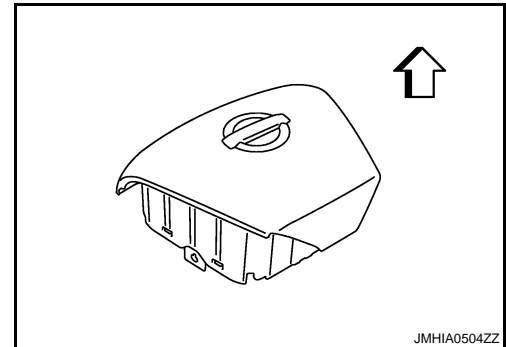


5. Remove the driver air bag module.

CAUTION:

- Always place the driver air bag module with pad side facing upward.

↖ : Upward



- Never impact the driver air bag module.
- Replace the driver air bag module if it has been dropped or sustained an impact.



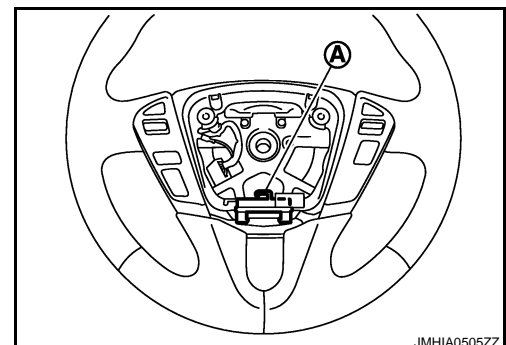
- Never insert any foreign objects (screwdriver, etc.) into the driver air bag module.
- Never disassemble the driver air bag module.
- Never expose the driver air bag module to temperatures exceeding 90 °C (194 °F).
- Never allow oil, grease, detergent, or water to come in contact with the driver air bag module.

INSTALLATION

Install in the reverse order of removal.

CAUTION:

- Never use the old TORX bolts after removal, replace with the new bolts.
- Fix the driver air bag harness to the harness fixing hook (A).



DRIVER AIR BAG MODULE

< ON-VEHICLE REPAIR >

[FOR USA AND CANADA]

- Tighten the TORX bolts after completely adjusting the centers of fixing holes on the driver air bag module side and the steering wheel side. If the holes are misaligned, the bolt threads are damaged and the module is not installed securely.
- If malfunction is detected by the air bag warning lamp, after repair or replacement of the malfunctioning parts, reset the memory using self-diagnosis or CONSULT-III. Refer to [SRC-18, "Diagnosis Description"](#).
- After the work is completed, check that no system malfunction is detected by air bag warning lamp.

A

B

C

D

E

F

G

SR

I

J

K

L

M

N

O

P

SPIRAL CABLE

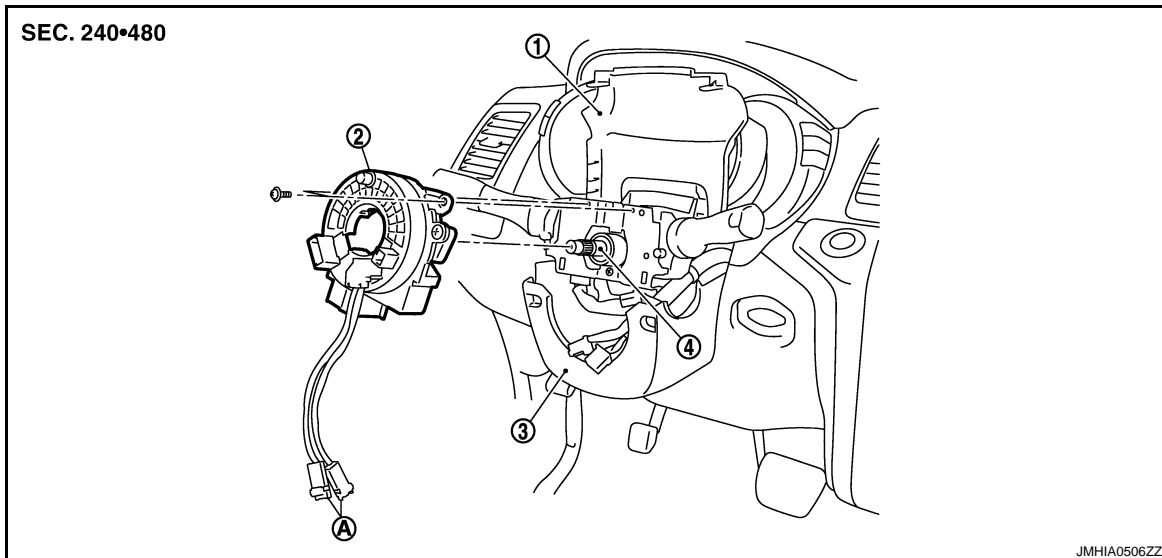
< ON-VEHICLE REPAIR >

[FOR USA AND CANADA]

SPIRAL CABLE

Exploded View

INFOID:000000003367287



1. Steering column cover (upper)
2. Spiral cable
3. Steering column cover (lower)
4. Steering column assembly
- A. Driver air bag harness connector

Removal and Installation

INFOID:000000003367288

WARNING:

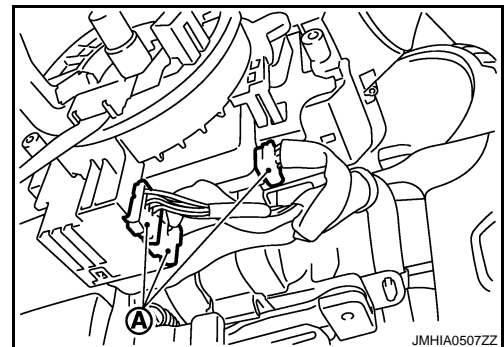
- Before servicing, turn ignition switch OFF, disconnect battery negative terminal and wait at least 3 minutes.
- Never use the air tools or electric tools for servicing.

REMOVAL

1. Remove the driver air bag module. Refer to [SR-5, "Removal and Installation"](#).
2. Remove the steering wheel. Refer to [ST-15, "Removal and Installation"](#).
3. Remove the steering column cover (upper/lower). Refer to [IP-11, "Exploded View"](#).
4. Disconnect the spiral cable body side harness connectors (A).

NOTE:

Disconnect the spiral cable body side harness connectors after removing the spiral cable.



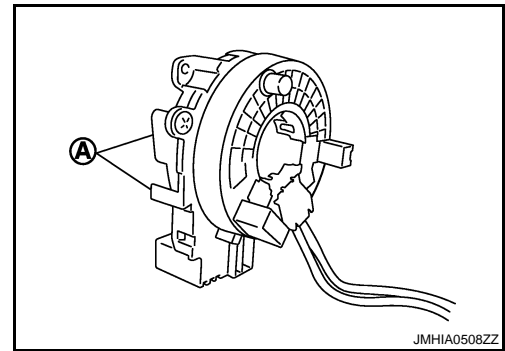
5. Remove the spiral cable fixing screws.

SPIRAL CABLE

< ON-VEHICLE REPAIR >

[FOR USA AND CANADA]

6. Remove the spiral cable side pawls (A).



7. Pull out forward the spiral cable.

CAUTION:

- Never impact the spiral cable.
- Never impact the spiral cable by dropping, etc. Replace the spiral cable if it has been dropped or sustained an impact.



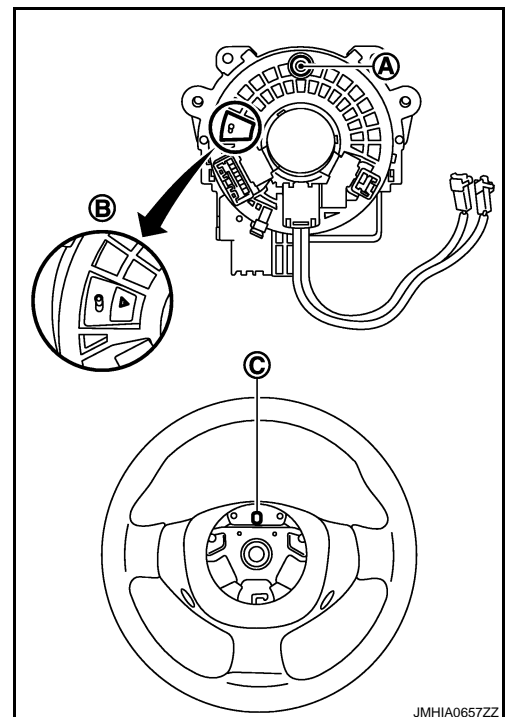
- Never disassemble the spiral cable.
- Never apply lubricant to the spiral cable.
- Never allow oil, grease, detergent, or water to come in contact with the spiral cable.

INSTALLATION

Install in the reverse order of removal.

CAUTION:

- The spiral cable may snap during steering operation if the cable is installed in an improper position. The neutral position is set as per the following.
- Turn carefully the spiral cable clockwise to the end position. Then turn it counterclockwise (about 2 and a half turns) and stop turning at the mark (B) on which the stopper insertion holes are in the same position.
- The service part is installed in the neutral position by the stopper and can be set without adjusting after the stopper is removed.
- Never over turn the spiral cable or go beyond number of turns required. (This will cause the cable to snap.)
- Adjust the spiral cable locating pin (A) to the steering wheel locating pin hole (C).



SPIRAL CABLE

< ON-VEHICLE REPAIR >

[FOR USA AND CANADA]

-
- If malfunction is detected by the air bag warning lamp, after repair or replacement of the malfunctioning parts, reset the memory using self-diagnosis or CONSULT-III. Refer to [SRC-18, "Diagnosis Description"](#).
 - After the work is completed, check that no system malfunction is detected by air bag warning lamp.

FRONT PASSENGER AIR BAG MODULE

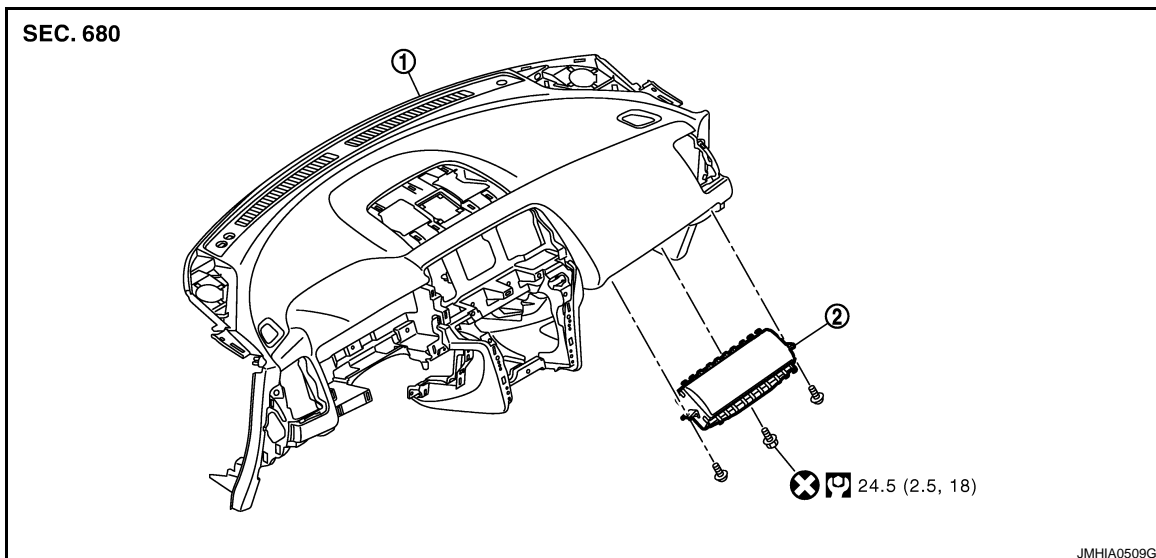
< ON-VEHICLE REPAIR >

[FOR USA AND CANADA]

FRONT PASSENGER AIR BAG MODULE

Exploded View

INFOID:000000003367289



1. Instrument panel assembly
2. Front passenger air bag module

Refer to [GI-4, "Components"](#) for symbols in the figure.

Removal and Installation

INFOID:000000003367290

WARNING:

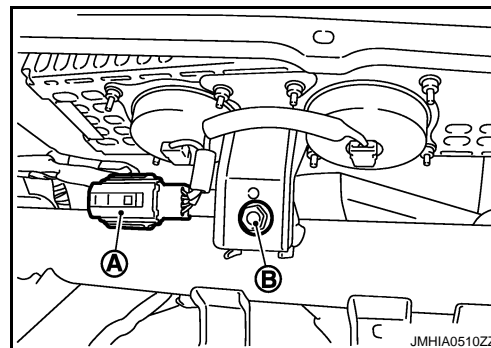
- Before servicing, turn ignition switch OFF, disconnect battery negative terminal and wait at least 3 minutes.
- Always work from the side of air bag module. Never work in front of it.
- Never use the air tools or electric tools for servicing.

REMOVAL

1. Remove the glove box lid assembly. Refer to [IP-12, "Removal and Installation"](#).
2. Remove the Instrument lower assist panel. Refer to [IP-12, "Removal and Installation"](#).
3. Disconnect the front passenger air bag harness connector (A).
4. Remove the front passenger air bag module fixing bolt (B).

NOTE:

The figure shows the installed front passenger air bag module. (Under view of the module installed without glove box cover.)



5. Remove the instrument panel assembly (1). Refer to [IP-12, "Removal and Installation"](#).

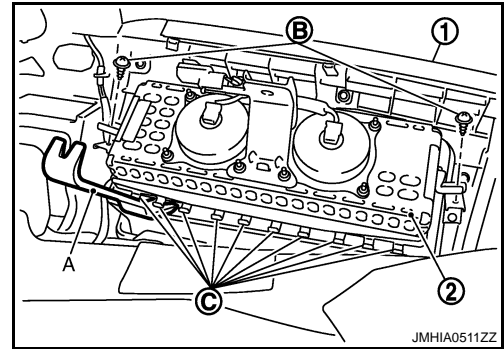
A
B
C
D
E
F
G
SR
I
J
K
L
M
N
O
P

FRONT PASSENGER AIR BAG MODULE

[FOR USA AND CANADA]

< ON-VEHICLE REPAIR >

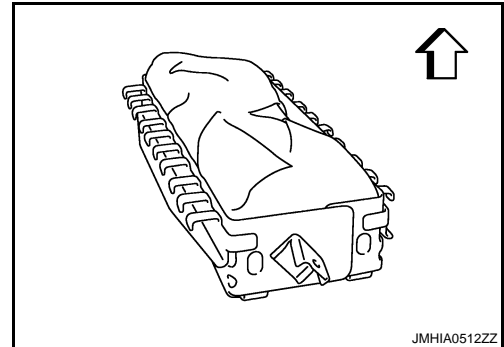
6. Remove the front passenger air bag module fixing screws (B).
7. Disconnect the pawls (C) by using remover tool (A), and then remove the front passenger air bag module (2) from instrument panel.



CAUTION:

- Always place the front passenger air bag module with pad side facing upward.

↕ : Upward



- Never impact the passenger air bag module.
- Replace the front passenger air bag module if it has been dropped or sustained an impact.



- Never insert any foreign objects (screwdriver, etc.) into front passenger air bag module.
- Never disassembly the front passenger air bag module.
- Never expose the front passenger air bag module to temperatures exceeding 90 °C (194 °F).
- Never allow oil, grease, detergent, or water to come in contact with the front passenger air bag module.

INSTALLATION

Install in the reverse order of removal.

CAUTION:

- Never use the old fixing bolts after removal, replace with the new bolts.
- Never damage the harness while installing.
- If malfunction is detected by the air bag warning lamp, after repair or replacement of the malfunctioning parts, reset the memory using self-diagnosis or CONSULT-III. Refer to [SRC-18, "Diagnosis Description"](#).
- After the work is completed, check that no system malfunction is detected by air bag warning lamp.

SIDE CURTAIN AIR BAG MODULE

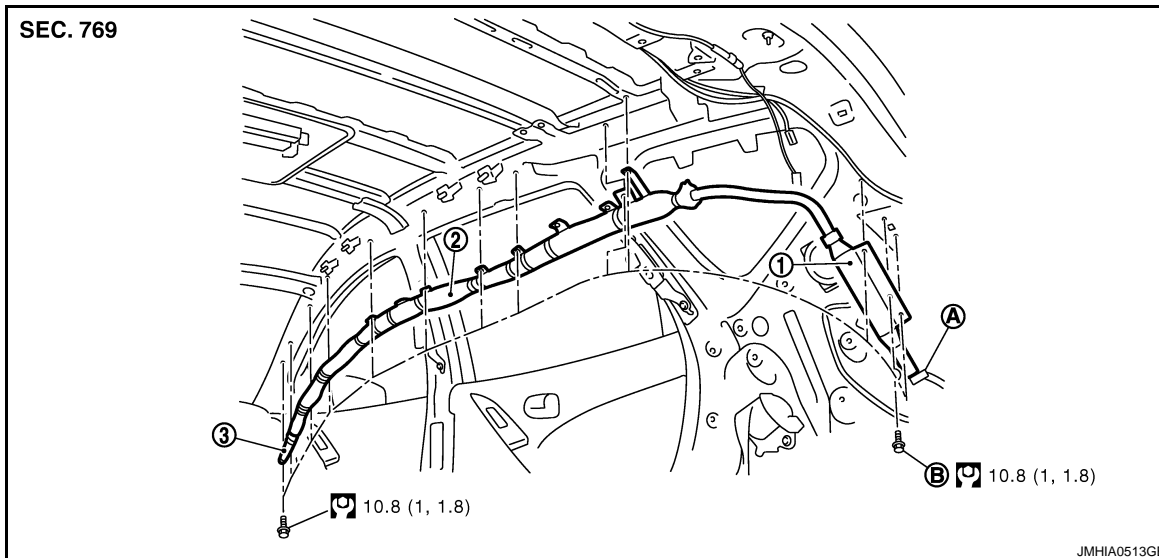
< ON-VEHICLE REPAIR >

[FOR USA AND CANADA]

SIDE CURTAIN AIR BAG MODULE

Exploded View

INFOID:000000003367291



- | | | |
|---|-------------------------|----------|
| 1. Side curtain air bag inflator | 2. Side curtain air bag | 3. Strap |
| A. Side curtain air bag harness connector | B. Ground bolt | |

Refer to [GI-4, "Components"](#) for symbols in the figure.

Removal and Installation

INFOID:000000003367292

WARNING:

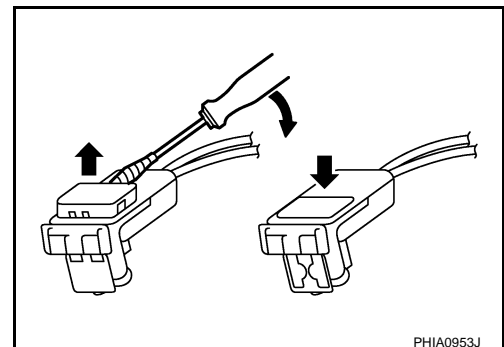
- Before servicing, turn ignition switch OFF, disconnect battery negative terminal and wait at least 3 minutes.
- Never use air tools or electric tools for servicing.

REMOVAL

1. Remove the headlining.
 - Normal roof models: Refer to [INT-26, "NORMAL ROOF : Removal and Installation"](#).
 - Sunroof models: Refer to [INT-29, "SUNROOF : Removal and Installation"](#).
2. Remove the side curtain air bag harness connector.

NOTE:

- For installing/removing the side curtain air bag harness connector, insert thin screwdriver wrapped in tape into notch, lift lock and remove the connector.
- Install the connector with lock raised, and push lock into the connector.
- After installing the connector, check that the lock is pushed securely into it.



3. Remove the fixing bolts, and then remove the side curtain air bag module.

CAUTION:

SIDE CURTAIN AIR BAG MODULE

< ON-VEHICLE REPAIR >

[FOR USA AND CANADA]

- Never impact the side curtain air bag module.
- Replace the side curtain air bag module if it has been dropped or sustained an impact.



- Never insert any foreign objects (screwdriver, etc.) into the side curtain air bag module.
- Never disassemble the side curtain air bag module.
- Never expose the side curtain air bag module to temperatures exceeding 90 °C (194 °F).
- Never allow oil, grease, detergent, or water to come in contact with the side curtain air bag module.

INSTALLATION

Install in the reverse order of removal.

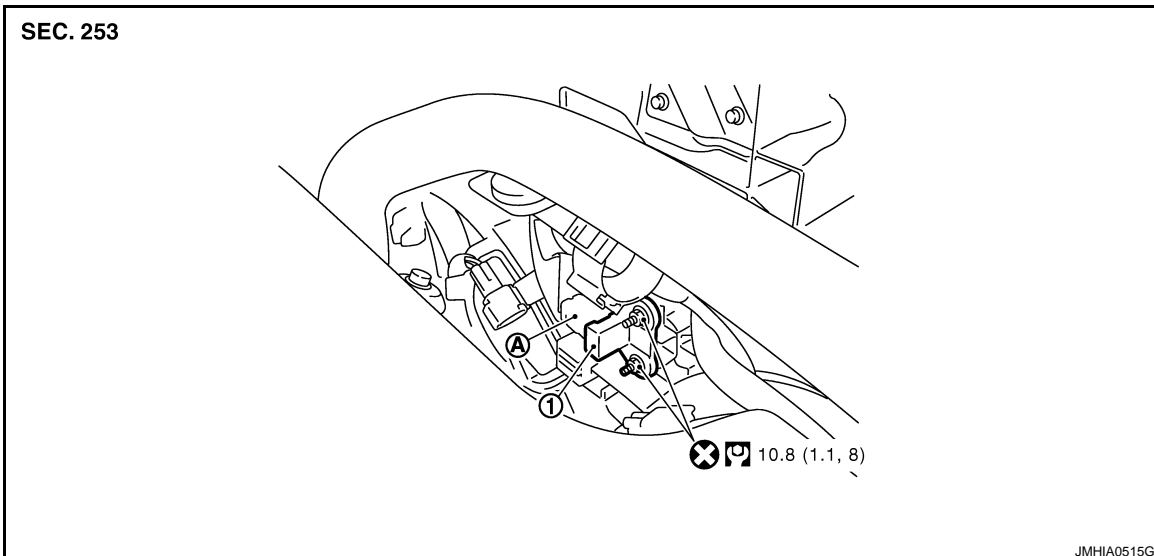
CAUTION:

- If malfunction is detected by the air bag warning lamp, after repair or replacement of the malfunctioning parts, reset the memory using self-diagnosis or CONSULT-III. Refer to [SRC-20, "CONSULT-III Function"](#).
- After the work is completed, check that no system malfunction is detected by air bag warning lamp.

CRASH ZONE SENSOR

Exploded View

INFOID:000000003367293



- 1. Crash zone sensor
- A. Crash zone sensor harness connector

Refer to [GI-4, "Components"](#) for symbols in the figure.

Removal and Installation

INFOID:000000003367294

WARNING:

- Before servicing, turn ignition switch OFF, disconnect battery negative terminal and wait at least 3 minutes.
- Never use air tools or electric tools for servicing.

REMOVAL

1. Remove the radiator cover grill (RH). Refer to [EM-27, "Exploded View"](#).
2. Remove the air duct (inlet). Refer to [EM-27, "Exploded View"](#).
3. Remove the crash zone sensor fixing nuts.
4. Disconnect the crash zone sensor harness connector, and then remove the crash zone sensor.

CAUTION:

- Never impact the crash zone sensor.
- Replace the crash zone sensor if it has been dropped or sustained an impact.



- Replace the crash zone sensor of deployed SRS driver air bag and deployed SRS front passenger air bag.

INSTALLATION

Install in the reverse order of removal.

A
B
C
D
E
F
G
SR
I
J
K
L
M
N
O
P

CRASH ZONE SENSOR

< ON-VEHICLE REPAIR >

[FOR USA AND CANADA]

CAUTION:

- Never use the old fixing nuts after removal, replace with the new nuts.
- If malfunction is detected by the air bag warning lamp, after repair or replacement of the malfunctioning parts, reset the memory using self-diagnosis or CONSULT-III. Refer to [SRC-18, "Diagnosis Description"](#).
- After the work is completed, check that no system malfunction is detected by air bag warning lamp.

SIDE AIR BAG (SATELLITE) SENSOR

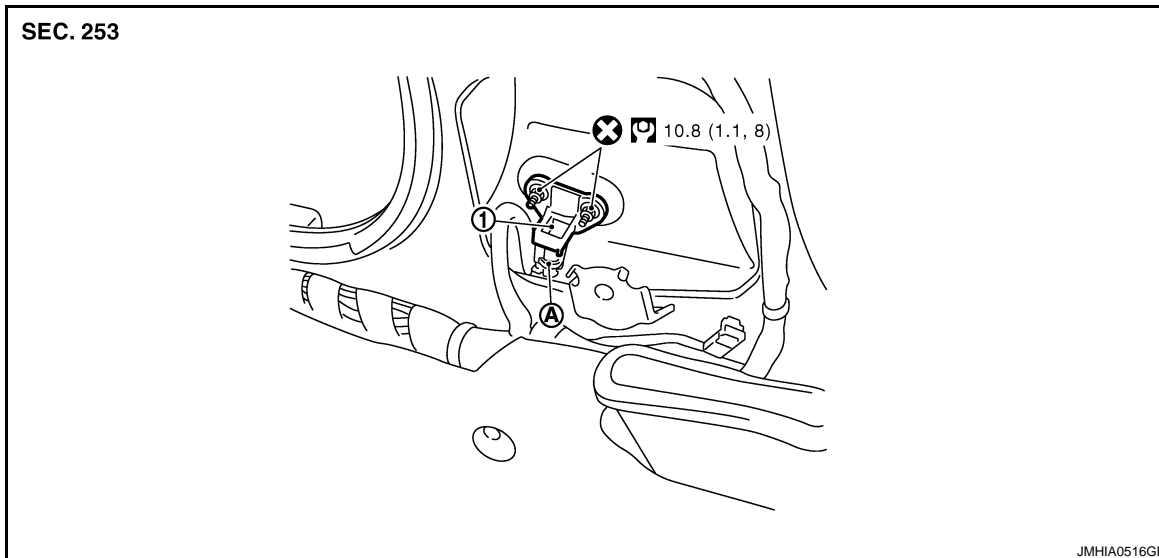
< ON-VEHICLE REPAIR >

[FOR USA AND CANADA]

SIDE AIR BAG (SATELLITE) SENSOR

Exploded View

INFOID:000000003367295



1. Side air bag (satellite) sensor
- A. Side air bag (satellite) sensor harness connector

Refer to [GI-4, "Components"](#) for symbols in the figure.

Removal and Installation

INFOID:000000003367296

WARNING:

- Before servicing, turn ignition switch OFF, disconnect battery negative terminal and wait at least 3 minutes.
- Never use the air tools or electric tools for servicing.

REMOVAL

1. Remove the front seat belt. Refer to [SB-5, "SEAT BELT RETRACTOR : Removal and Installation"](#).
2. Remove the side air bag (satellite) sensor fixing nuts.
3. Disconnect the side air bag (satellite) sensor harness connector, and then remove the side air bag (satellite) sensor.

CAUTION:

- Never impact the side air bag (satellite) sensor.
- Replace the side air bag (satellite) sensor if it has been dropped or sustained an impact.



- Replace the side air bag (satellite) sensor of deployed SRS front side air bag module and deployed SRS side curtain air bag module.

INSTALLATION

A
B
C
D
E
F
G
SR
I
J
K
L
M
N
O
P

SIDE AIR BAG (SATELLITE) SENSOR

< ON-VEHICLE REPAIR >

[FOR USA AND CANADA]

Install in the reverse order of removal.

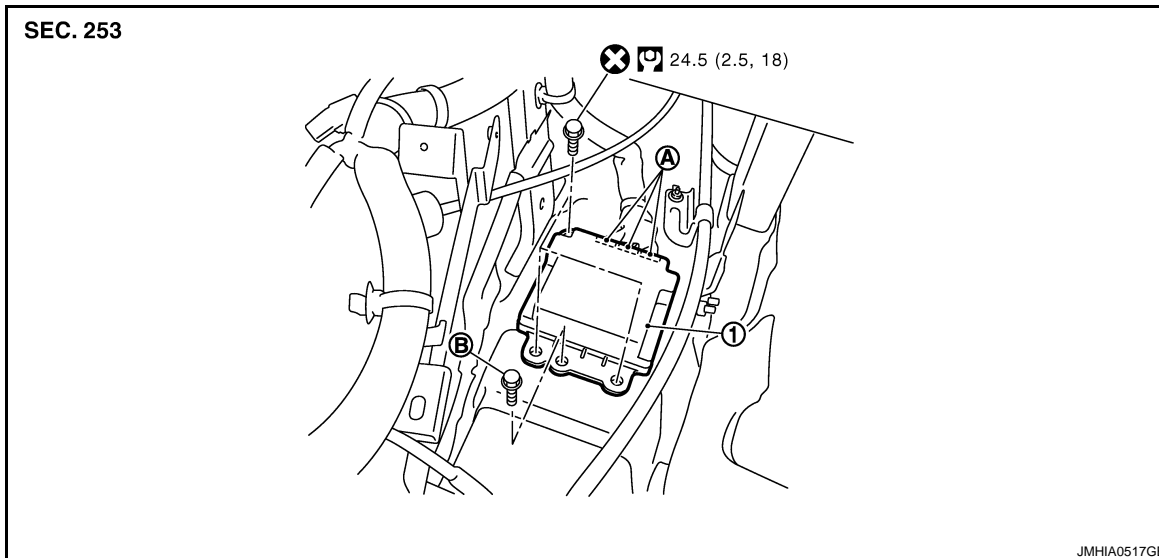
CAUTION:

- Never use the old fixing nuts after removal, replace with the new nuts.
- If malfunction is detected by the air bag warning lamp, after repair or replacement of the malfunctioning parts, reset the memory using self-diagnosis or CONSULT-III. Refer to [SRC-18, "Diagnosis Description"](#).
- After the work is completed, check that no system malfunction is detected by air bag warning lamp.

DIAGNOSIS SENSOR UNIT

Exploded View

INFOID:000000003367297



1. Diagnosis sensor unit
 A. Diagnosis sensor unit harness connector
 B. Ground bolt

Refer to [GI-4, "Components"](#) for symbols in the figure.

Removal and Installation

INFOID:000000003367298

WARNING:

- Before servicing, turn ignition switch OFF, disconnect battery negative terminal and wait at least 3 minutes.
- Before disconnecting the air bag sensor unit harness connector, be sure to disconnect the each harness connector of the air bag module and pre-tensioner seat belt to prevent air bag deployment by static electricity and pre-tensioner seat belt operation.
- Never use the air tools or electric tools for servicing.

REMOVAL

1. Disconnect the each connector of all air bag modules and pre-tensioner seat belts.
2. Remove the instrument lower cover (LH/RH). Refer to [IP-19, "Exploded View"](#).
3. Remove the rear foot duct 1 (LH/RH). Refer to [VTL-121, "REAR FOOT DUCT 1 : Exploded View"](#).
4. Remove the instrument stay LH. Refer to [IP-19, "Exploded View"](#).
5. Remove the front console bracket. Refer to [IP-19, "Exploded View"](#).
6. Disconnect the diagnosis sensor unit harness connectors.
7. Remove the fixing bolts, ground bolt, and then remove the diagnosis sensor unit.

CAUTION:

DIAGNOSIS SENSOR UNIT

< ON-VEHICLE REPAIR >

[FOR USA AND CANADA]

- Replace the diagnosis sensor unit if it has been dropped or sustained an impact.



- Replace the diagnosis sensor unit of deployed SRS air bag and deployed SRS front seat belt pre-tensioner.

INSTALLATION

Install in the reverse order of removal.

CAUTION:

- Never use the old fixing bolts after removal, replace with the new fixing bolts.
- If malfunction is detected by the air bag warning lamp, after repair or replacement of the malfunctioning parts, reset the memory using self-diagnosis or CONSULT-III. Refer to [SRC-18. "Diagnosis Description"](#).
- After the work is completed, check that no system malfunction is detected by air bag warning lamp.

ECU DISCRIMINATED NO.

After replacing the diagnosis sensor unit, confirm that the diagnosis sensor unit identification is correct for the vehicle as equipped.

Destination	Specification	ECU DISCRIMINATED No.
USA/CAN	Driver and passenger air bag, front seat belt pre-tensioner, front side air bag and side curtain air bag (+OCS/EDR)	FD08

FRONT SEAT BELT PRE-TENSIONER

< ON-VEHICLE REPAIR >

[FOR USA AND CANADA]

FRONT SEAT BELT PRE-TENSIONER

Removal and Installation

INFOID:000000003367299

For removal and installation procedures, refer to [SB-5. "SEAT BELT RETRACTOR : Removal and Installation"](#).

- A
- B
- C
- D
- E
- F
- G
- SR**
- I
- J
- K
- L
- M
- N
- O
- P

OCCUPANT CLASSIFICATION SYSTEM CONTROL UNIT

< ON-VEHICLE REPAIR >

[FOR USA AND CANADA]

OCCUPANT CLASSIFICATION SYSTEM CONTROL UNIT

Removal and Installation

INFOID:000000003367300

For removal and installation

The occupant classification system control unit and seat sensor mat are an integral part of the front passenger seat cushion and are replaced as an assembly. Refer to [SE-106, "Removal and Installation"](#).

PRECAUTION

PRECAUTIONS

Precaution for Supplemental Restraint System (SRS) "AIR BAG" and "SEAT BELT PRE-TENSIONER"

INFOID:000000003367766

The Supplemental Restraint System such as "AIR BAG" and "SEAT BELT PRE-TENSIONER", used along with a front seat belt, helps to reduce the risk or severity of injury to the driver and front passenger for certain types of collision. This system includes seat belt switch inputs and dual stage front air bag modules. The SRS system uses the seat belt switches to determine the front air bag deployment, and may only deploy one front air bag, depending on the severity of a collision and whether the front occupants are belted or unbelted. Information necessary to service the system safely is included in the "SRS AIRBAG" and "SEAT BELT" of this Service Manual.

WARNING:

- To avoid rendering the SRS inoperative, which could increase the risk of personal injury or death in the event of a collision which would result in air bag inflation, all maintenance must be performed by an authorized NISSAN/INFINITI dealer.
- Improper maintenance, including incorrect removal and installation of the SRS, can lead to personal injury caused by unintentional activation of the system. For removal of Spiral Cable and Air Bag Module, see the "SRS AIRBAG".
- Never use electrical test equipment on any circuit related to the SRS unless instructed to in this Service Manual. SRS wiring harnesses can be identified by yellow and/or orange harnesses or harness connectors.

PRECAUTIONS WHEN USING POWER TOOLS (AIR OR ELECTRIC) AND HAMMERS

When working near the Airbag Diagnosis Sensor Unit or other Airbag System sensors while ignition switch is ON or engine is running, never use air or electric power tools or strike near the sensor(s) with a hammer. Heavy vibration may activate the sensor(s), deploy the airbag(s), possibly cause serious injury. When using air or electric power tools or hammers, always turn OFF ignition switch, disconnect the battery, and wait 3 minutes or more before performing any service.

Service

INFOID:000000003367302

- Do not use electrical test equipment to check SRS circuits unless instructed to in this Service Manual.
- Before servicing the SRS, turn ignition switch OFF, disconnect battery negative terminal and wait at least 3 minutes.
For approximately 3 minutes after the battery negative terminal is removed, it is still possible for the air bag and seat belt pre-tensioner to deploy. Therefore, do not work on any SRS connectors or wires until at least 3 minutes have elapsed.
- Diagnosis sensor unit must always be installed with their arrow marks "←" pointing towards the front of the vehicle for proper operation. Also check diagnosis sensor unit for cracks, deformities or rust before installation and replace as required.
- The spiral cable must be aligned in the neutral position since its rotations are limited. Do not turn steering wheel and column after removal of steering gear.
- Handle air bag module carefully. Always place driver and front passenger air bag modules with the pad side facing upward and seat mounted front side air bag module standing with the stud bolt side facing down.
- Conduct self-diagnosis to check entire SRS for proper functioning after replacing any components.
- After air bag inflates, the front instrument panel assembly should be replaced if damaged.
- Always replace instrument panel pad following front passenger air bag deployment.

A
B
C
D
E
F
G
SR
I
J
K
L
M
N
O
P

PREPARATION

< PREPARATION >

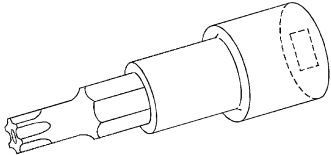
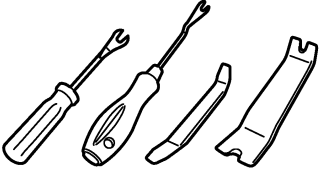
[FOR MEXICO]

PREPARATION

PREPARATION

Commercial Service Tools

INFOID:000000003367303

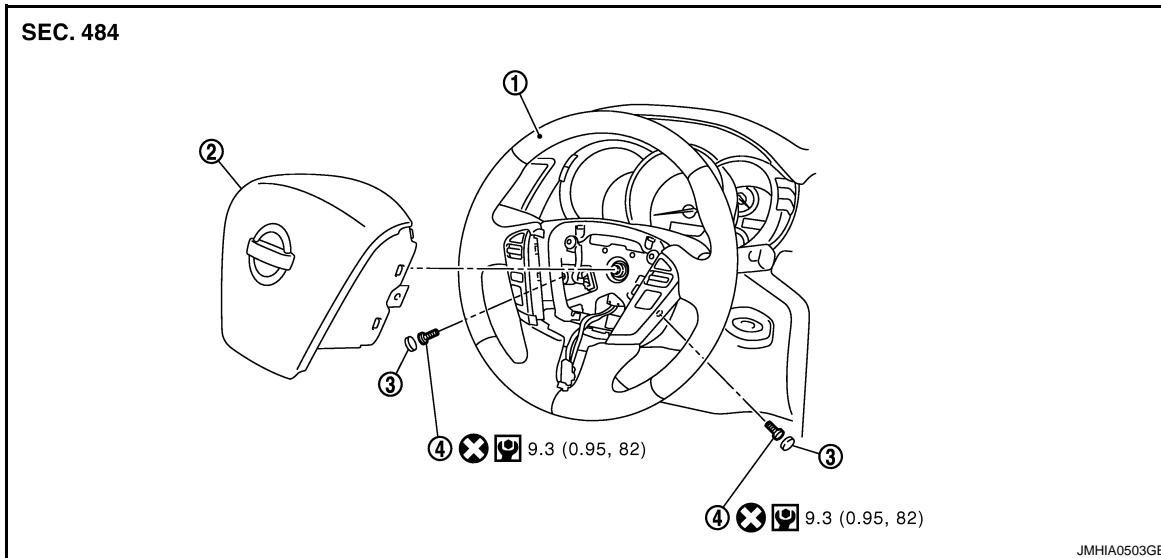
Tool name	Description
<p data-bbox="181 514 451 546">Tamper resistant TORX bit</p>  <p data-bbox="841 630 901 646">S-NT757</p>	<p data-bbox="987 514 1302 546">Removes driver air bag module</p>
<p data-bbox="181 766 321 798">Remover tool</p>  <p data-bbox="841 882 933 898">JMKIA3050ZZ</p>	<p data-bbox="987 766 1356 798">Removes clips, pawls, and metal clip</p>

ON-VEHICLE REPAIR

DRIVER AIR BAG MODULE

Exploded View

INFOID:000000004199742



- | | | |
|----------------------|--------------------------|---------------------|
| 1. Steering wheel | 2. Driver air bag module | 3. Side lid (LH/RH) |
| 4. TORX bolt (LH/RH) | | |

Refer to [GI-4, "Components"](#) for symbols in the figure.

Removal and Installation

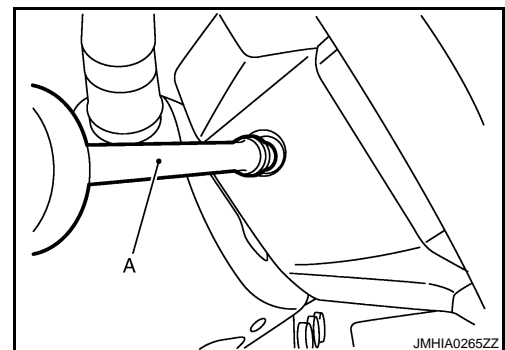
INFOID:000000004199743

WARNING:

- Before servicing, turn ignition switch OFF, disconnect battery negative terminal and wait at least 3 minutes.
- Always work from the side of air bag module. Never work in front of it.
- Never use the air tools or electric tools for servicing.

REMOVAL

1. Remove the side lids (LH/RH).
2. Remove the TORX bolts (LH/RH) from the steering wheel (1) lower side using TORX bit (A).



3. Pull out the driver air bag module.

DRIVER AIR BAG MODULE

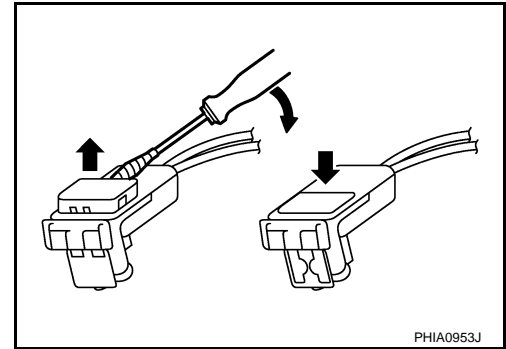
< ON-VEHICLE REPAIR >

[FOR MEXICO]

4. Disconnect the driver air bag harness connector.

NOTE:

- For installing/removing the driver air bag harness connector, insert thin screwdriver wrapped in tape into notch, lift lock and remove the connector.
- Install the connector with lock raised, and push lock into the connector.
- After installing the connector, check that the lock is pushed securely into it.

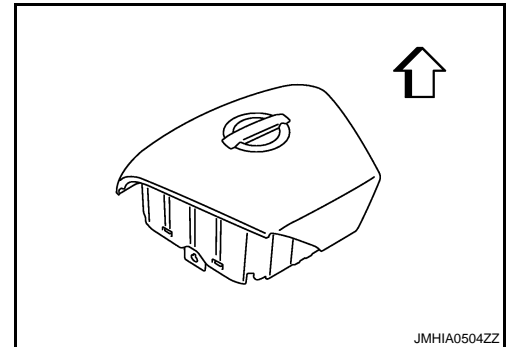


5. Remove the driver air bag module.

CAUTION:

- Always place the driver air bag module with pad side facing upward.

↖ : Upward



- Never impact the driver air bag module.
- Replace the driver air bag module if it has been dropped or sustained an impact.



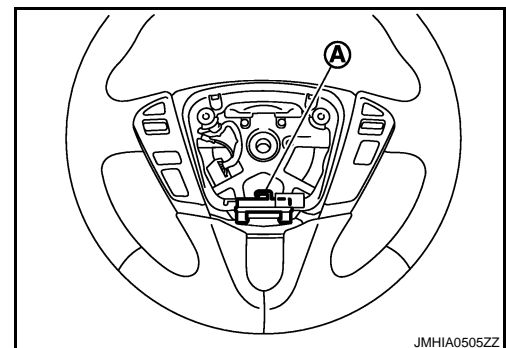
- Never insert any foreign objects (screwdriver, etc.) into the driver air bag module.
- Never disassemble the driver air bag module.
- Never expose the driver air bag module to temperatures exceeding 90 °C (194 °F).
- Never allow oil, grease, detergent, or water to come in contact with the driver air bag module.

INSTALLATION

Install in the reverse order of removal.

CAUTION:

- Never use the old TORX bolts after removal, replace with the new bolts.
- Fix the driver air bag harness to the harness fixing hook (A).



DRIVER AIR BAG MODULE

< ON-VEHICLE REPAIR >

[FOR MEXICO]

- Tighten the TORX bolts after completely adjusting the centers of fixing holes on the driver air bag module side and the steering wheel side. If the holes are misaligned, the bolt threads are damaged and the module is not installed securely.
- If malfunction is detected by the air bag warning lamp, after repair or replacement of the malfunctioning parts, reset the memory using self-diagnosis or CONSULT-III. Refer to [SRC-18, "Diagnosis Description"](#).
- After the work is completed, check that no system malfunction is detected by air bag warning lamp.

A

B

C

D

E

F

G

SR

I

J

K

L

M

N

O

P

SPIRAL CABLE

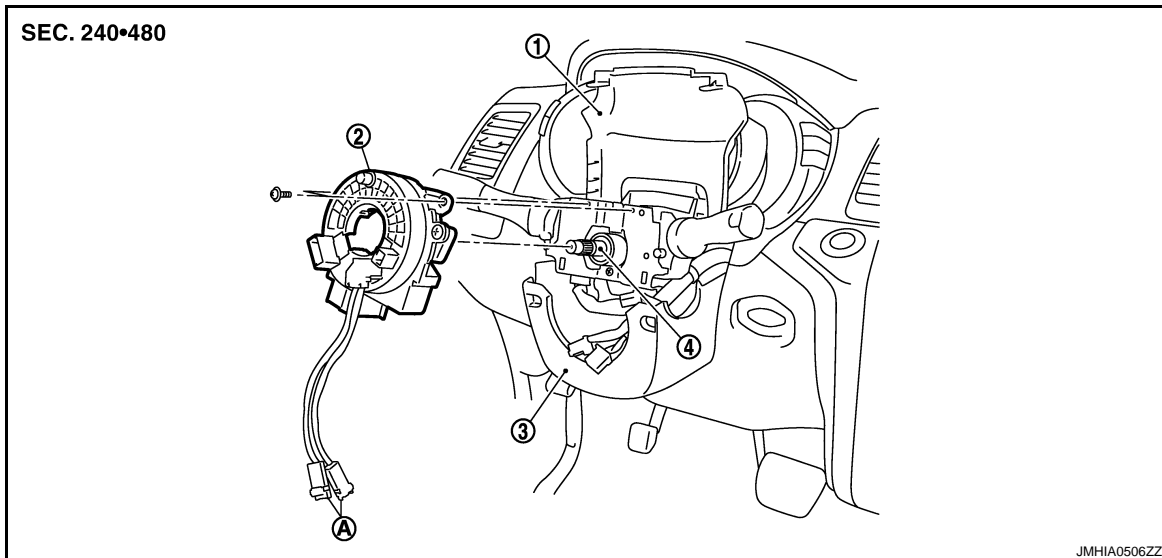
< ON-VEHICLE REPAIR >

[FOR MEXICO]

SPIRAL CABLE

Exploded View

INFOID:000000004199744



1. Steering column cover (upper)
2. Spiral cable
3. Steering column cover (lower)
4. Steering column assembly
- A. Driver air bag harness connector

Removal and Installation

INFOID:000000004199745

WARNING:

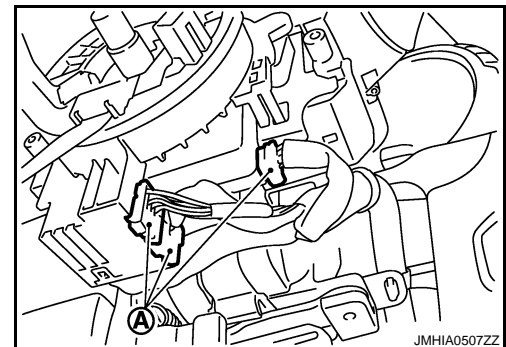
- Before servicing, turn ignition switch OFF, disconnect battery negative terminal and wait at least 3 minutes.
- Never use the air tools or electric tools for servicing.

REMOVAL

1. Remove the driver air bag module. Refer to [SR-25, "Removal and Installation"](#).
2. Remove the steering wheel. Refer to [ST-15, "Removal and Installation"](#).
3. Remove the steering column cover (upper/lower). Refer to [IP-11, "Exploded View"](#).
4. Disconnect the spiral cable body side harness connectors (A).

NOTE:

Disconnect the spiral cable body side harness connectors after removing the spiral cable.



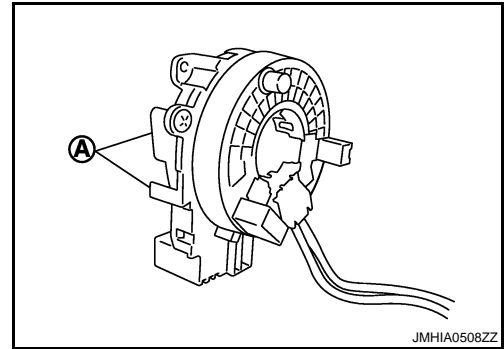
5. Remove the spiral cable fixing screws.

SPIRAL CABLE

< ON-VEHICLE REPAIR >

[FOR MEXICO]

6. Remove the spiral cable side pawls (A).



7. Pull out forward the spiral cable.

CAUTION:

- Never impact the spiral cable.
- Never impact the spiral cable by dropping, etc. Replace the spiral cable if it has been dropped or sustained an impact.



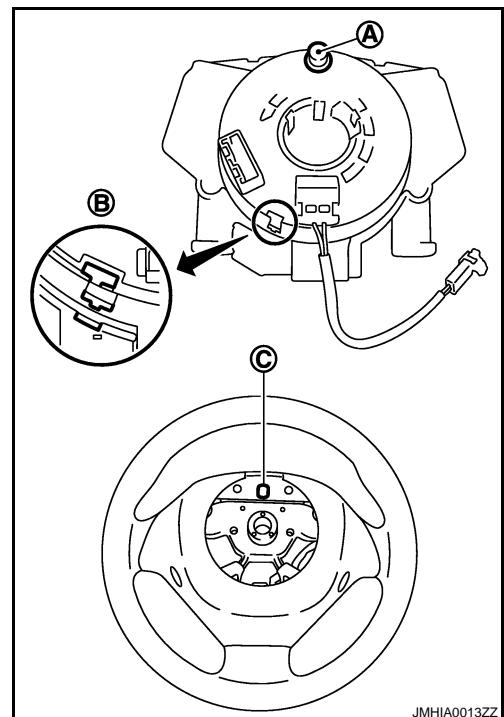
- Never disassemble the spiral cable.
- Never apply lubricant to the spiral cable.
- Never allow oil, grease, detergent, or water to come in contact with the spiral cable.

INSTALLATION

Install in the reverse order of removal.

CAUTION:

- The spiral cable may snap during steering operation if the cable is installed in an improper position. The neutral position is set as per the following.
- Turn carefully the spiral cable clockwise to the end position. Then turn it counterclockwise (about 2 and a half turns) and stop turning at the mark (B) on which the stopper insertion holes are in the same position.
- The service part is installed in the neutral position by the stopper and can be set without adjusting after the stopper is removed.
- Never over turn the spiral cable or go beyond number of turns required. (This will cause the cable to snap.)
- Adjust the spiral cable locating pin (A) to the steering wheel locating pin hole (C).



SPIRAL CABLE

< ON-VEHICLE REPAIR >

[FOR MEXICO]

- If malfunction is detected by the air bag warning lamp, after repair or replacement of the malfunctioning parts, reset the memory using self-diagnosis or CONSULT-III. Refer to [SRC-18, "Diagnosis Description"](#).
- After the work is completed, check that no system malfunction is detected by air bag warning lamp.

FRONT PASSENGER AIR BAG MODULE

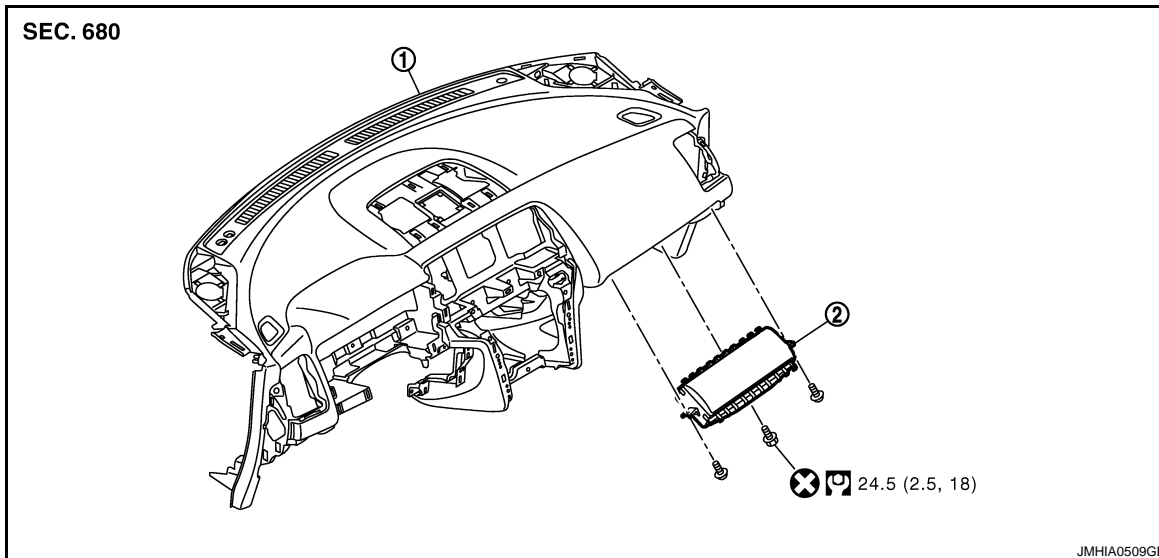
< ON-VEHICLE REPAIR >

[FOR MEXICO]

FRONT PASSENGER AIR BAG MODULE

Exploded View

INFOID:000000004199746



1. Instrument panel assembly
2. Front passenger air bag module

Refer to [GI-4, "Components"](#) for symbols in the figure.

Removal and Installation

INFOID:000000004199747

WARNING:

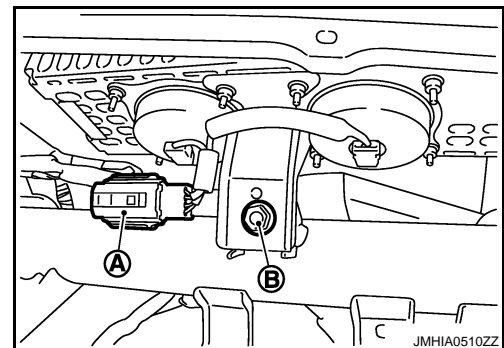
- Before servicing, turn ignition switch OFF, disconnect battery negative terminal and wait at least 3 minutes.
- Always work from the side of air bag module. Never work in front of it.
- Never use the air tools or electric tools for servicing.

REMOVAL

1. Remove the glove box lid assembly. Refer to [IP-12, "Removal and Installation"](#).
2. Remove the Instrument lower assist panel. Refer to [IP-12, "Removal and Installation"](#).
3. Disconnect the front passenger air bag harness connector (A).
4. Remove the front passenger air bag module fixing bolt (B).

NOTE:

The figure shows the installed front passenger air bag module. (Under view of the module installed without glove box cover.)



5. Remove the instrument panel assembly (1). Refer to [IP-12, "Removal and Installation"](#).

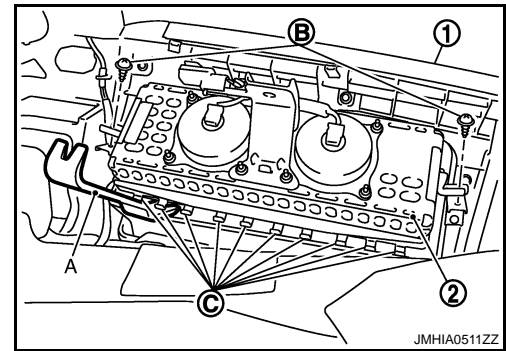
A
B
C
D
E
F
G
SR
I
J
K
L
M
N
O
P

FRONT PASSENGER AIR BAG MODULE

< ON-VEHICLE REPAIR >

[FOR MEXICO]

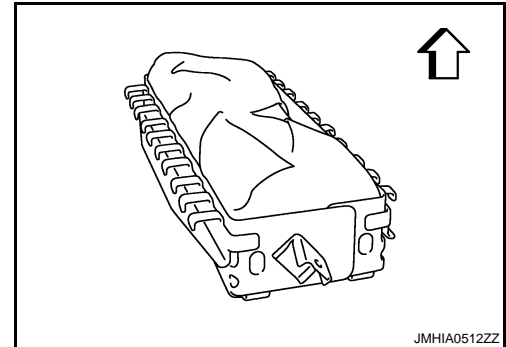
6. Remove the front passenger air bag module fixing screws (B).
7. Disconnect the pawls (C) by using remover tool (A), and then remove the front passenger air bag module (2) from instrument panel.



CAUTION:

- Always place the front passenger air bag module with pad side facing upward.

↕ : Upward



- Never impact the passenger air bag module.
- Replace the front passenger air bag module if it has been dropped or sustained an impact.



- Never insert any foreign objects (screwdriver, etc.) into front passenger air bag module.
- Never disassembly the front passenger air bag module.
- Never expose the front passenger air bag module to temperatures exceeding 90 °C (194 °F).
- Never allow oil, grease, detergent, or water to come in contact with the front passenger air bag module.

INSTALLATION

Install in the reverse order of removal.

CAUTION:

- Never use the old fixing bolts after removal, replace with the new bolts.
- Never damage the harness while installing.
- If malfunction is detected by the air bag warning lamp, after repair or replacement of the malfunctioning parts, reset the memory using self-diagnosis or CONSULT-III. Refer to [SRC-18, "Diagnosis Description"](#).
- After the work is completed, check that no system malfunction is detected by air bag warning lamp.

FRONT SIDE AIR BAG MODULE

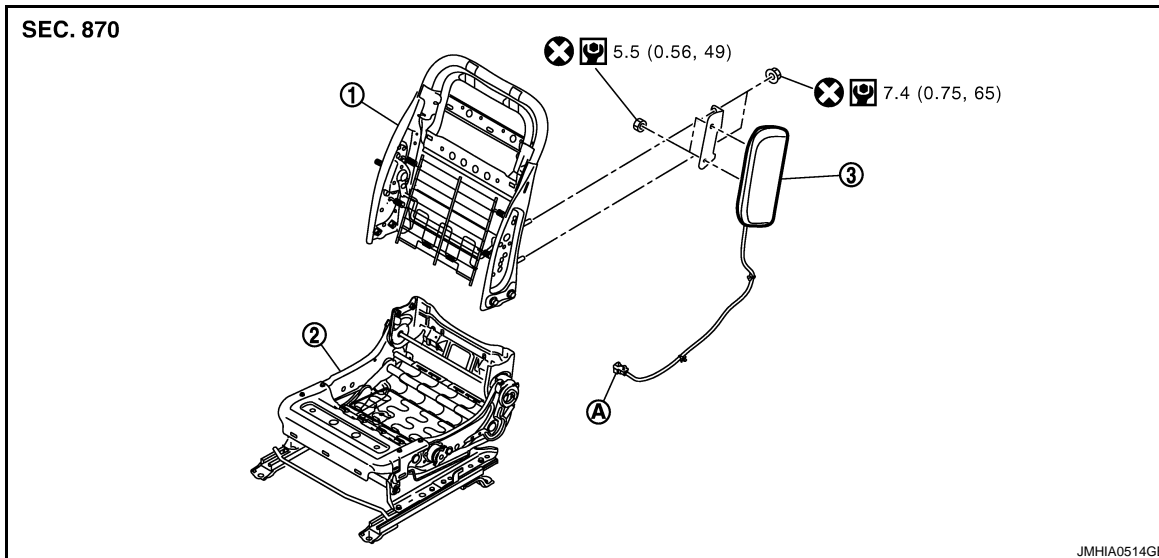
< ON-VEHICLE REPAIR >

[FOR MEXICO]

FRONT SIDE AIR BAG MODULE

Exploded View

INFOID:000000003390288



1. Seatback flame 2. Seat cushion flame 3. Front side air bag module
A. Front side air bag harness connector

Refer to [GI-4, "Components"](#) for symbols in the figure.

Removal and Installation

INFOID:000000003390289

REMOVAL

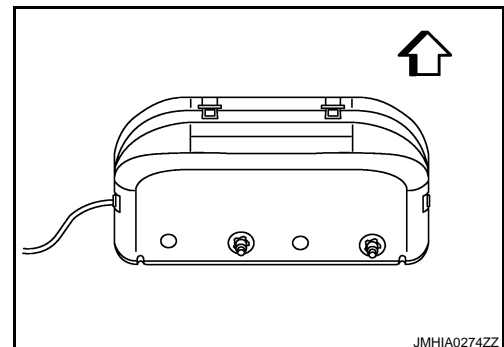
WARNING:

- Before servicing, turn ignition switch OFF, disconnect battery negative terminal and wait at least 3 minutes.
 - Always work from the rear of the front side air bag module.
 - Never use the air tools or electric tools for servicing.
1. Remove the front seat. Refer to [SE-106, "Removal and Installation"](#).
 2. Remove the seatback board. Refer to [SE-99, "Exploded View"](#).
 3. Remove the front side air bag module fixing nuts, and/or harness connector.
 4. Remove the front side air bag module.

CAUTION:

- Always place the front side air bag module with pad side facing upward.

⇐ : Upward



- Never impact the front side air bag module.

FRONT SIDE AIR BAG MODULE

< ON-VEHICLE REPAIR >

[FOR MEXICO]

- Replace the front side air bag module if it has been dropped or sustained an impact.



- Never insert any foreign objects (screwdriver, etc.) into front side air bag module.
- Never disassemble the front side air bag module.
- Never expose the front side air bag module to temperatures exceeding 90 °C (194 °F).
- Never allow oil, grease, detergent, or water to come in contact with the front side air bag module.

INSTALLATION

Install in the reverse order of removal.

CAUTION:

- Never use the old fixing nuts after removal, replace with the new nuts.
- If malfunction is detected by the air bag warning lamp, after repair or replacement of the malfunctioning parts, reset the memory using self-diagnosis or CONSULT-III. Refer to [SRC-177, "Diagnosis Description"](#).
- After the work is completed, check that no malfunctioning system is detected by air bag warning lamp.

SIDE CURTAIN AIR BAG MODULE

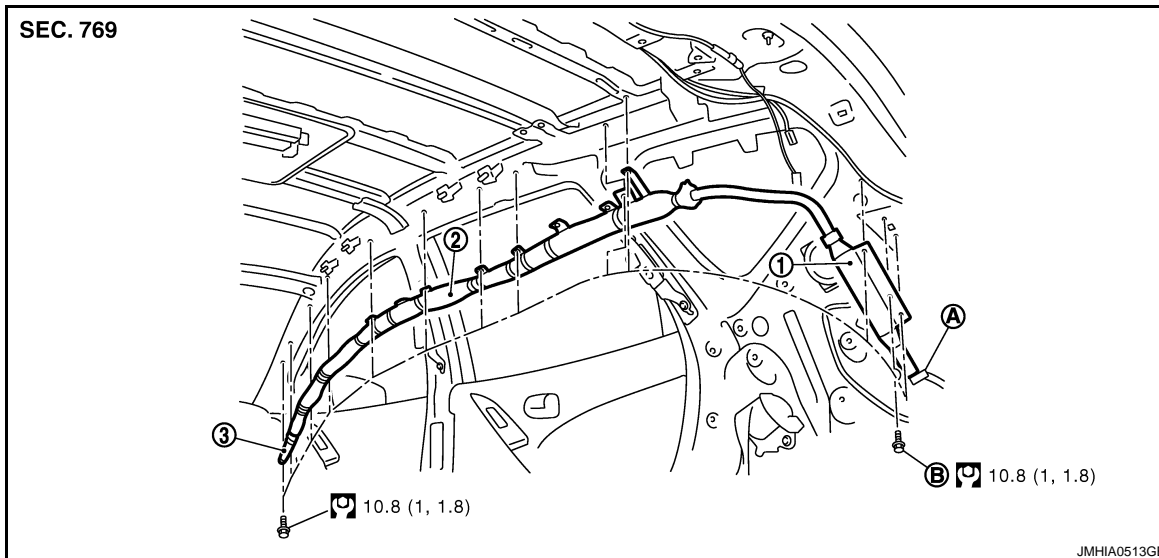
< ON-VEHICLE REPAIR >

[FOR MEXICO]

SIDE CURTAIN AIR BAG MODULE

Exploded View

INFOID:000000004199748



- | | | |
|---|-------------------------|----------|
| 1. Side curtain air bag inflator | 2. Side curtain air bag | 3. Strap |
| A. Side curtain air bag harness connector | B. Ground bolt | |

Refer to [GI-4, "Components"](#) for symbols in the figure.

Removal and Installation

INFOID:000000004199749

WARNING:

- Before servicing, turn ignition switch OFF, disconnect battery negative terminal and wait at least 3 minutes.
- Never use air tools or electric tools for servicing.

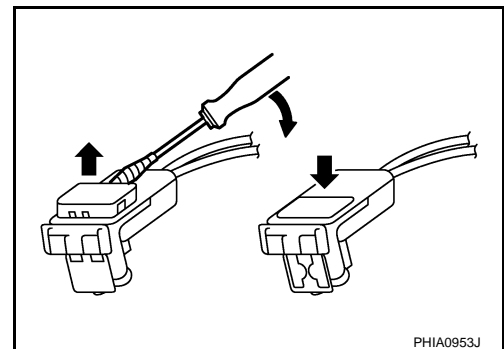
REMOVAL

1. Remove the headlining.
 - Normal roof models: Refer to [INT-26, "NORMAL ROOF : Removal and Installation"](#).
 - Sunroof models: Refer to [INT-29, "SUNROOF : Removal and Installation"](#).

2. Remove the side curtain air bag harness connector.

NOTE:

- For installing/removing the side curtain air bag harness connector, insert thin screwdriver wrapped in tape into notch, lift lock and remove the connector.
- Install the connector with lock raised, and push lock into the connector.
- After installing the connector, check that the lock is pushed securely into it.



3. Remove the fixing bolts, and then remove the side curtain air bag module.

CAUTION:

SIDE CURTAIN AIR BAG MODULE

< ON-VEHICLE REPAIR >

[FOR MEXICO]

- Never impact the side curtain air bag module.
- Replace the side curtain air bag module if it has been dropped or sustained an impact.



- Never insert any foreign objects (screwdriver, etc.) into the side curtain air bag module.
- Never disassemble the side curtain air bag module.
- Never expose the side curtain air bag module to temperatures exceeding 90 °C (194 °F).
- Never allow oil, grease, detergent, or water to come in contact with the side curtain air bag module.

INSTALLATION

Install in the reverse order of removal.

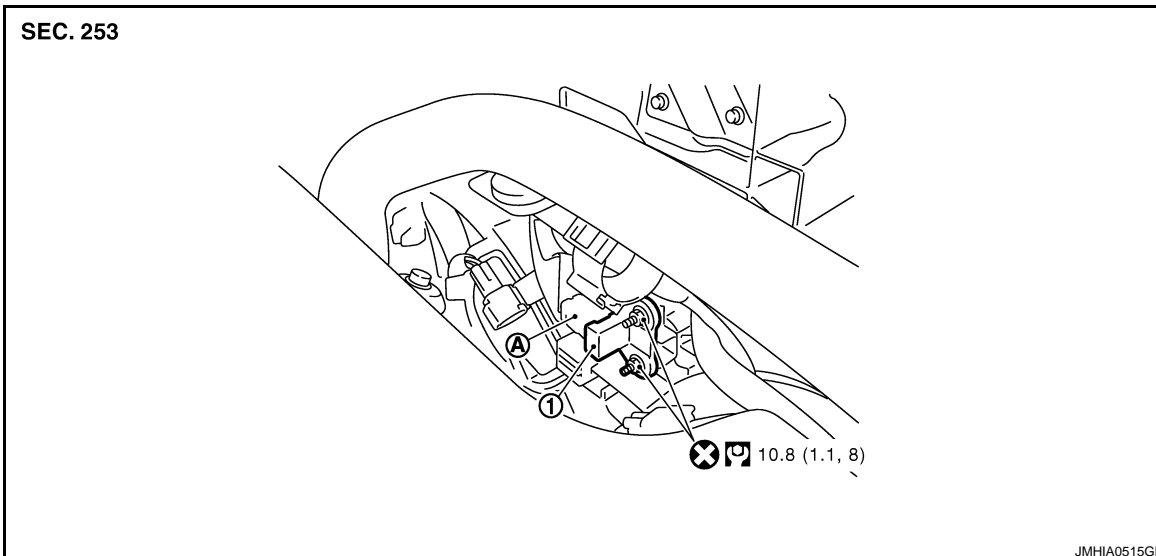
CAUTION:

- If malfunction is detected by the air bag warning lamp, after repair or replacement of the malfunctioning parts, reset the memory using self-diagnosis or CONSULT-III. Refer to [SRC-18, "Diagnosis Description"](#).
- After the work is completed, check that no system malfunction is detected by air bag warning lamp.

CRASH ZONE SENSOR

Exploded View

INFOID:000000004199750



- 1. Crash zone sensor
- A. Crash zone sensor harness connector

Refer to [GI-4, "Components"](#) for symbols in the figure.

Removal and Installation

INFOID:000000004199751

WARNING:

- Before servicing, turn ignition switch OFF, disconnect battery negative terminal and wait at least 3 minutes.
- Never use air tools or electric tools for servicing.

REMOVAL

1. Remove the radiator cover grill (RH). Refer to [EM-27, "Exploded View"](#).
2. Remove the air duct (inlet). Refer to [EM-27, "Exploded View"](#).
3. Remove the crash zone sensor fixing nuts.
4. Disconnect the crash zone sensor harness connector, and then remove the crash zone sensor.

CAUTION:

- Never impact the crash zone sensor.
- Replace the crash zone sensor if it has been dropped or sustained an impact.



- Replace the crash zone sensor of deployed SRS driver air bag and deployed SRS front passenger air bag.

INSTALLATION

Install in the reverse order of removal.

A
B
C
D
E
F
G
I
J
K
L
M
N
O
P

SR

CRASH ZONE SENSOR

< ON-VEHICLE REPAIR >

[FOR MEXICO]

CAUTION:

- Never use the old fixing nuts after removal, replace with the new nuts.
- If malfunction is detected by the air bag warning lamp, after repair or replacement of the malfunctioning parts, reset the memory using self-diagnosis or CONSULT-III. Refer to [SRC-18, "Diagnosis Description"](#).
- After the work is completed, check that no system malfunction is detected by air bag warning lamp.

SIDE AIR BAG (SATELLITE) SENSOR

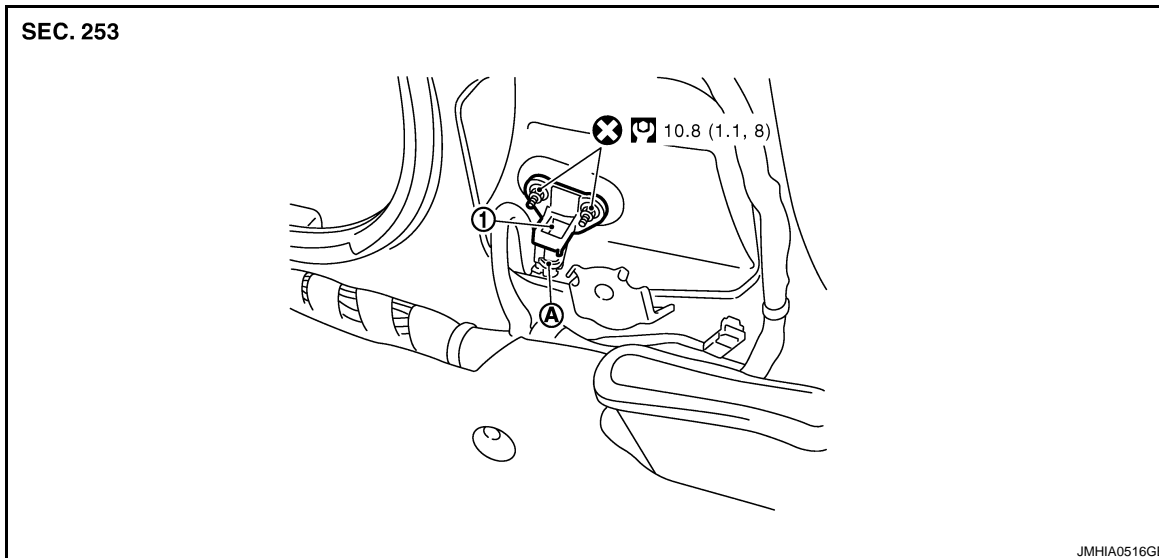
< ON-VEHICLE REPAIR >

[FOR MEXICO]

SIDE AIR BAG (SATELLITE) SENSOR

Exploded View

INFOID:000000004199752



1. Side air bag (satellite) sensor
- A. Side air bag (satellite) sensor harness connector

Refer to [GI-4, "Components"](#) for symbols in the figure.

Removal and Installation

INFOID:000000004199753

WARNING:

- Before servicing, turn ignition switch OFF, disconnect battery negative terminal and wait at least 3 minutes.
- Never use the air tools or electric tools for servicing.

REMOVAL

1. Remove the front seat belt. Refer to [SB-5, "SEAT BELT RETRACTOR : Removal and Installation"](#).
2. Remove the side air bag (satellite) sensor fixing nuts.
3. Disconnect the side air bag (satellite) sensor harness connector, and then remove the side air bag (satellite) sensor.

CAUTION:

- Never impact the side air bag (satellite) sensor.
- Replace the side air bag (satellite) sensor if it has been dropped or sustained an impact.



- Replace the side air bag (satellite) sensor of deployed SRS front side air bag module and deployed SRS side curtain air bag module.

INSTALLATION

A
B
C
D
E
F
G
SR
I
J
K
L
M
N
O
P

SIDE AIR BAG (SATELLITE) SENSOR

< ON-VEHICLE REPAIR >

[FOR MEXICO]

Install in the reverse order of removal.

CAUTION:

- Never use the old fixing nuts after removal, replace with the new nuts.
- If malfunction is detected by the air bag warning lamp, after repair or replacement of the malfunctioning parts, reset the memory using self-diagnosis or CONSULT-III. Refer to [SRC-18, "Diagnosis Description"](#).
- After the work is completed, check that no system malfunction is detected by air bag warning lamp.

DIAGNOSIS SENSOR UNIT

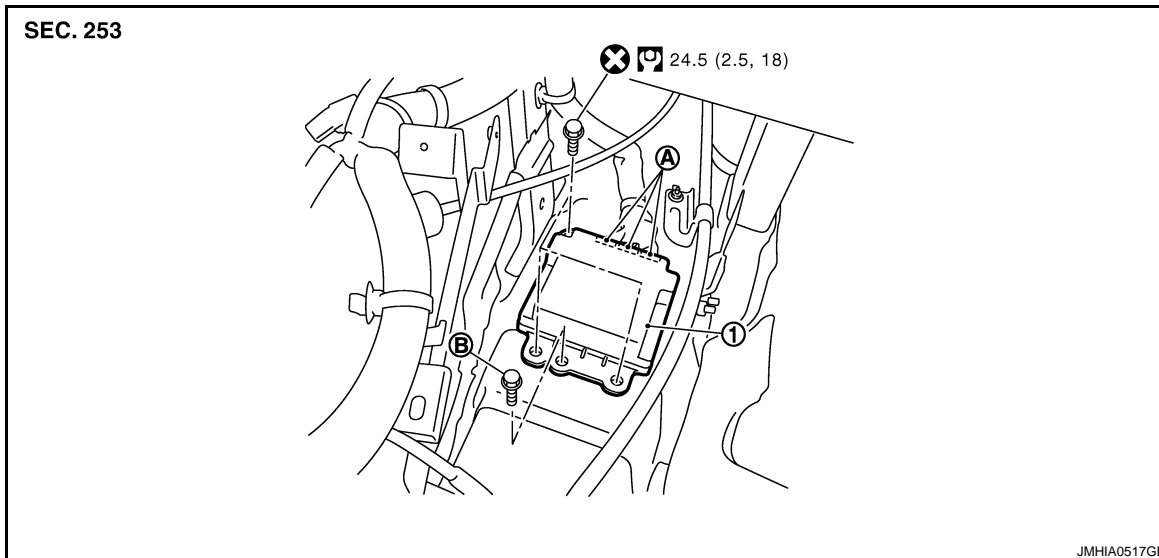
< ON-VEHICLE REPAIR >

[FOR MEXICO]

DIAGNOSIS SENSOR UNIT

Exploded View

INFOID:000000004199754



1. Diagnosis sensor unit
- A. Diagnosis sensor unit harness connector
- B. Ground bolt

Refer to [GI-4, "Components"](#) for symbols in the figure.

Removal and Installation

INFOID:000000004199755

WARNING:

- Before servicing, turn ignition switch OFF, disconnect battery negative terminal and wait at least 3 minutes.
- Before disconnecting the air bag sensor unit harness connector, be sure to disconnect the each harness connector of the air bag module and pre-tensioner seat belt to prevent air bag deployment by static electricity and pre-tensioner seat belt operation.
- Never use the air tools or electric tools for servicing.

REMOVAL

1. Disconnect the each connector of all air bag modules and pre-tensioner seat belts.
2. Remove the instrument lower cover (LH/RH). Refer to [IP-19, "Exploded View"](#).
3. Remove the rear foot duct 1 (LH/RH). Refer to [VTL-121, "REAR FOOT DUCT 1 : Exploded View"](#).
4. Remove the instrument stay LH. Refer to [IP-19, "Exploded View"](#).
5. Remove the front console bracket. Refer to [IP-19, "Exploded View"](#).
6. Disconnect the diagnosis sensor unit harness connectors.
7. Remove the fixing bolts, ground bolt, and then remove the diagnosis sensor unit.

CAUTION:

DIAGNOSIS SENSOR UNIT

< ON-VEHICLE REPAIR >

[FOR MEXICO]

- Replace the diagnosis sensor unit if it has been dropped or sustained an impact.



- Replace the diagnosis sensor unit of deployed SRS air bag and deployed SRS front seat belt pre-tensioner.

INSTALLATION

Install in the reverse order of removal.

CAUTION:

- Never use the old fixing bolts after removal, replace with the new fixing bolts.
- If malfunction is detected by the air bag warning lamp, after repair or replacement of the malfunctioning parts, reset the memory using self-diagnosis or CONSULT-III. Refer to [SRC-18. "Diagnosis Description"](#).
- After the work is completed, check that no system malfunction is detected by air bag warning lamp.

ECU DISCRIMINATED NO.

After replacing the diagnosis sensor unit, confirm that the diagnosis sensor unit identification is correct for the vehicle as equipped.

Destination	Specification	ECU DISCRIMINATED No.
USA/CAN	Driver and passenger air bag, front seat belt pre-tensioner, front side air bag and side curtain air bag (+OCS/EDR)	FD08

FRONT SEAT BELT PRE-TENSIONER

< ON-VEHICLE REPAIR >

[FOR MEXICO]

FRONT SEAT BELT PRE-TENSIONER

Removal and Installation

INFOID:000000003367318

For removal and installation procedures, refer to [SB-5. "SEAT BELT RETRACTOR : Removal and Installation"](#).

- A
- B
- C
- D
- E
- F
- G
- SR
- I
- J
- K
- L
- M
- N
- O
- P

